



2022 OPERATORS MANUAL

Below Ground Unit

HMI 7 Console



Thank you for choosing SubAir®	- 5 -
Safety	- 6 -
General Safety Precautions	- 7 -
Manual Limitations	- 8 -
SubAir® Installation	- 9 -
SubAir® Vault, Distributed Separator, and Isolation Dual Valve	- 9 -
<i>Figure 1: Vault, Separator and Dual Valve Installation</i>	- 9 -
Installation	- 9 -
Vault, Separator, and Dual Valve Installation Notes	- 9 -
Control Panel Installation	- 10 -
<i>Figure 2: Control Panel Pad Detail</i>	- 10 -
Installation Notes	- 10 -
Equipment Overview	- 11 -
Drainage Piping Components	- 11 -
Air/Water Separator	- 11 -
<i>Figure 3: Air/Water Separator Assembly (SubAir® Part Number : 50040A for 4: or 50060A for 6")</i>	- 11 -
Dual Valve Assembly	- 11 -
<i>Figure 4: Dual Valve Assembly (SubAir® Part Number: 51040D for 4", 51060D for 6", or 51046D for 4" to 6")</i>	- 11 -
Vault Assembly Components	- 12 -
<i>Figure 5: SubAir® Vault Assembly Component Diagram</i>	- 12 -
SubAir® Vault Parts List	- 13 -
SubAir® Control Panel	- 14 -
<i>Figure 6: New Control Panel Component Diagram</i>	- 14 -
SubAir® Control Panel	- 15 -
<i>Figure 7: New Control Panel Component Diagram</i>	- 15 -
New Control Panel Electrical Back Plate	- 16 -
<i>Figure 8: New Control Panel Electrical Component Diagram</i>	- 16 -
New Control Panel Electrical Back Plate	- 17 -
<i>Figure 9: New Control Panel Electrical Components</i>	- 17 -
New Control Panel Parts List	- 18 -
SubAir® Operation	- 19 -
Basic Operating Modes	- 19 -
Vacuum	- 19 -
<i>Figure 10: Vacuum Mode Air-Flow Illustration and Control Panel-Vacuum</i>	- 19 -
Pressure	- 19 -
<i>Figure 11: Pressure Mode Air-Flow Illustration and Control Panel – Pressure</i>	- 19 -

Intermittent Mode	- 20 -
<i>Figure 12: Intermittent Operation</i>	- 20 -
<i>Figure 13: Intermittent Thermostat Settings</i>	- 20 -
Detailed Theory of Operation	- 21 -
General Moisture Control	- 21 -
Rain/Irrigation Cycles	- 21 -
Flushing	- 21 -
Chemical Applications	- 21 -
Syringing.....	- 21 -
Aeration and Gas Exchange	- 21 -
Temperature Moderation	- 22 -
SubAir® Operation	- 23 -
Programming the Basic Operating Modes	- 23 -
Setting Manual Operations	- 24 -
Setting Intermittent Operations	- 26 -
Setting Schedule Names and Operations.....	- 27 -
Setting Schedule Names and Operations – cont’d	- 28 -
Setting Scheduling Names and Operations – cont’d	- 29 -
Setting A Scheduled Program	- 30 -
Setting A Scheduled Program – cont’d	- 31 -
Setting A Scheduled Program – cont’d	- 32 -
Fault and Protection Features.....	- 33 -
Safety/Fault Circuit.....	- 33 -
Over-Current Protection	- 33 -
Periodic Inspection.....	- 34 -
Troubleshooting, System Faults, and Fault Indicator Illuminations	- 35 -
General Problems.....	- 35 -
Fault Indicator Illuminations	- 36 -
SubAir® Systems Limited Warranty	- 37 -
Electrical Schematics.....	- 38 -
Standard Electrical Schematic – Wiring Diagram Power Distribution	- 38 -
Standard Electrical Schematic – Wiring Diagram Power Distribution	- 39 -
Standard Electrical Schematic – Wiring Diagram Power Distribution	- 40 -
Standard Electrical Schematic – Wiring Diagram Power Distribution	- 41 -
Standard Electrical Schematic – Wiring Diagram Power Distribution	- 42 -
Standard Electrical Schematic – Wiring Diagram Power Distribution	- 43 -
Standard Electrical Schematic – Wiring Diagram Power Distribution	- 43 -
Standard Electrical Schematic – Wiring Diagram Power Distribution	- 45 -
Standard Electrical Schematic – Wiring Diagram Power Distribution	- 46 -
Standard Electrical Schematic – Wiring Diagram Power Distribution	- 47 -

Thank you for choosing SubAir®.

We appreciate your choice in selecting SubAir®, the pioneer and leader in subsurface aeration technology. Your SubAir product was built to the highest standards in the industry, and has been meticulously engineered to provide reliable, trouble free service. However, as with any power equipment product, customer safety and satisfaction largely depend upon understanding the product's intended use and operation. Negligence or being unfamiliar with the equipment, or how to use it properly, can result in personal injury or damage to the equipment. This in turn could lead to a false impression of quality or performance of the equipment. We urge you to read this manual before installing or operating your new equipment, and always follow the operating instructions, and safety precautions herein.

Please consider this owner's manual a permanent part of your SubAir® product, and always keep it available for reference.

SubAir® products are always backed by the SubAir® customer support team which is here to offer you fast, courteous service. For more information visit our website at www.SubAirSystems.com, or call 1-866-641-6663. If you would prefer to write to us, direct your letter to:

**SubAir Systems, LLC
Customer Service
1164 Industrial Avenue
Graniteville, SC, 29829 USA.**

Notice

This document is intended to aid in the proper installation and use of SubAir® equipment. It is intended to provide general guidance based on our experience and should not replace any industry standards or other pertinent regulations.

Precautions

Federal regulations covering safety for construction are published in the Safety and Health Regulations for Construction under the Department of Labor, Occupational Safety and Health Administration (OSHA). All electrical installations must be made by licensed electricians and must conform to all applicable federal and local electrical codes.

Warranty

SubAir® Systems LLC warranties are contingent upon proper design and installation of not only the materials and equipment provided by SubAir®, but also the connecting electrical systems that become part of the complete system. See the warranty section of the operating manual for full details.

SubAir® is not responsible for injury or damage resulting from improper installation, any noncompliance with the guidelines in this document, or from any use outside of the application for which it was sold.

Safety

All electrical work including installation and routine maintenance should be performed only by a trained and/or licensed electrician or SubAir® field service personnel. All electrical work is to conform to both local and National Electric Code specifications.

There is a lockable disconnect located on the SubAir® control panel. This disconnect should be locked in the "OFF" position before the control panel or SubAir® Vault is accessed. Appropriate "Lockout/Tagout" procedures consistent with all local and national (including, but not limit to OSHA and National Electric Code) specifications shall be followed during maintenance.

Each SubAir® unit is designed to provide protection to the equipment and any persons not familiar with the system. In addition to the disconnect, the blower motor is equipped with a variable speed drive with internal safety features. An in-vault float switch prevents equipment usage should water penetrate the vault. Fault signals present on the control panel notify the operator of potentially problematic equipment. The vaulted lid is equipped with a magnetic proximity switch to avoid operation should the unit's lid or viewport cover be removed. The control panel is fused and all components within the control panel are finger safe components.

Your safety is important! We urge all operators of your SubAir® System to read this manual thoroughly before operation. For your protection, it is essential that you take special notice of all safety precautions and follow the safety instructions provided precisely. Safety precautions throughout this manual and on the decals affixed to the SubAir® components are preceded by the labels DANGER, WARNING, or CAUTION. These labels indicate the severity of safety risk and it is essential that you understand them:

➤ DANGER

- A DANGER indicates an immediate hazard that will result in severe personal injury or death.

➤ WARNING

- A WARNING indicates an immediate hazard that could result in severe personal injury or death.

➤ CAUTION

- A CAUTION with the safety alert symbol indicates a hazard or unsafe practice that could result in minor personal injury.

➤ CAUTION

- A CAUTION without the safety alert symbol indicates a potentially hazardous situation or practice that could result in property damage or personal injury.

General Safety Precautions

Read the following WARNING statements before operating the SubAir® System.

➤ WARNING

- This owner's manual should be read completely before attempting to operate the system. Failure to follow the instructions and safety precautions in this manual could result in property damage, severe personal injury, or death
- If any High Voltage Warning sticker on labels have been damaged, removed, or cannot be easily read, they should be replaced immediately to avoid possible property damage, personal injury, or death.
- Any unauthorized modifications or alterations to this equipment may present safety hazards that are not presented in this manual. All warranties are void and SubAir® Systems, LLC is released from any liability for resulting injury and/or damage if equipment is used with unauthorized modifications or alterations. The safety precautions listed below must be followed whenever the system is being operated, inspected, or repaired. Other specific safety precautions appear throughout this manual and on the system.

➤ DANGER

- Prior to servicing the system, make sure the main disconnect switch on the control panel is in the "OFF" position and locked out.
- Do not by-pass or alter any safety switches or features associated with the SubAir® System. These include (but are not limited to) all proximity switches, disconnects, safety relays, and float switches.
- Do not disconnect the in-vault submersible dewatering pump from the power supply except as required to service or replace it.
- Never energize or operate the system without functioning submersible dewatering pump in the vault.
- Do not tamper with system components, electrical wiring, or connections. All electrical components, wiring and connections must be serviced by a qualified electrician.

➤ WARNING

- Only trained technicians should repair or service the system. Anyone performing even basic repairs or service should follow the procedures exactly as stated in this manual and follow all DANGER, WARNING, and CAUTION procedures listed in this manual.
- Shut down the system immediately if there is any sudden increase in blower vibration or other unusual change in operational characteristics.
- Wear safety glasses or approved eye protection when servicing.
- Improper use of product or failure to properly maintain it could result in decreased system performance or severe personal injury.
- Any modification or change to the system could result in severe personal injury or death.
- Use insulated tools when working on or around electrical connections.
- Do not attempt to service moving parts in the system while it is in operation.
- Stay clear of the intake/exhaust port while the system is in operation. Materials can be drawn into the blower intake and can become high-velocity projectiles if ejected at the exhaust port.

Manual Limitations

This manual has been prepared by SubAir® Systems, LLC. Information contained in this manual has been procured from numerous sources and is believed to be accurate. SubAir® Systems, LLC, reserves the right to change any information contained herein without prior notice. The user is responsible for determining whether this product is appropriate for their application. Should the user identify inaccuracies or inconsistencies within this manual the user is encouraged to contact a SubAir® representative for clarification.

This manual contains proprietary information that is protected by copyright. All rights are reserved. No part of this manual may be photocopied, reproduced, or translated to another language without the written consent of SubAir®.

Although the information contained in this manual was current at the time of printing, subsequent product design changes may vary slightly from the presentation in this manual.

SubAir® Installation

SubAir® Vault, Distributed Separator, and Isolation Dual Valve

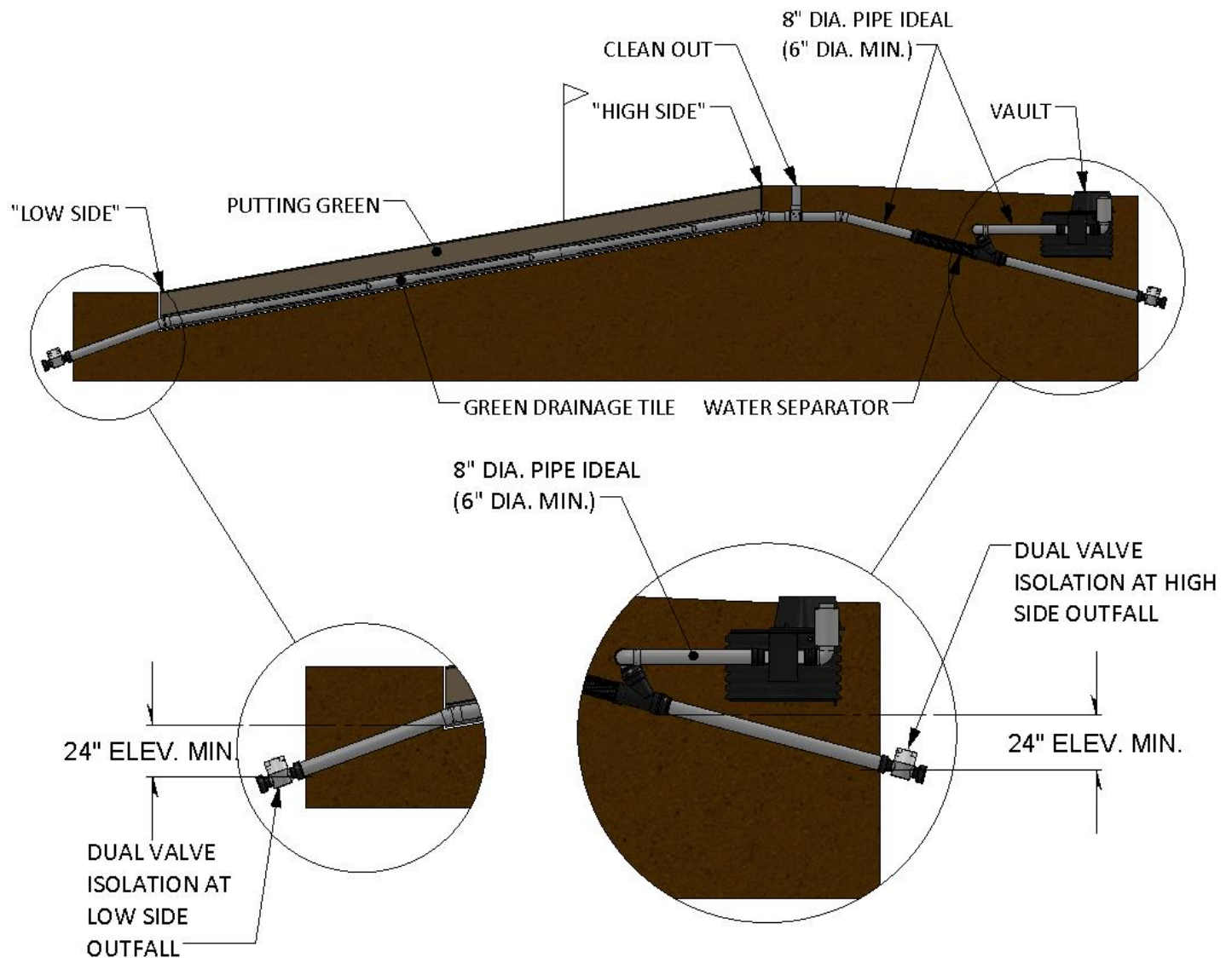


Figure 1: Vault, Separator and Dual Valve Installation

Installation

Vault, Separator, and Dual Valve Installation Notes

- Dual valves should be installed at a 15-30-degree angle towards outfall and may not operate correctly if installed at too steep an incline. Use angled fittings if necessary, to achieve acceptable installation angle.
- A minimum of 24" of vertical elevation is required between dual valve location and the edge of the green, or water separator. This will prevent water from reaching the green or water separator before it has enough weight to open the valve.
- All pipe junctions and connections should be thoroughly taped to prevent leakage. Failure to do so can result in water ingestion and soil erosion at the point of the leak.
- Sump pump discharge lines should be day-lighted where ever possible to prevent ground recirculation, or pipe blockage.
- Installation sites with large terrain elevation changes nearby may use vault gravity drain pipe in lieu of sump pumps.

Control Panel Installation

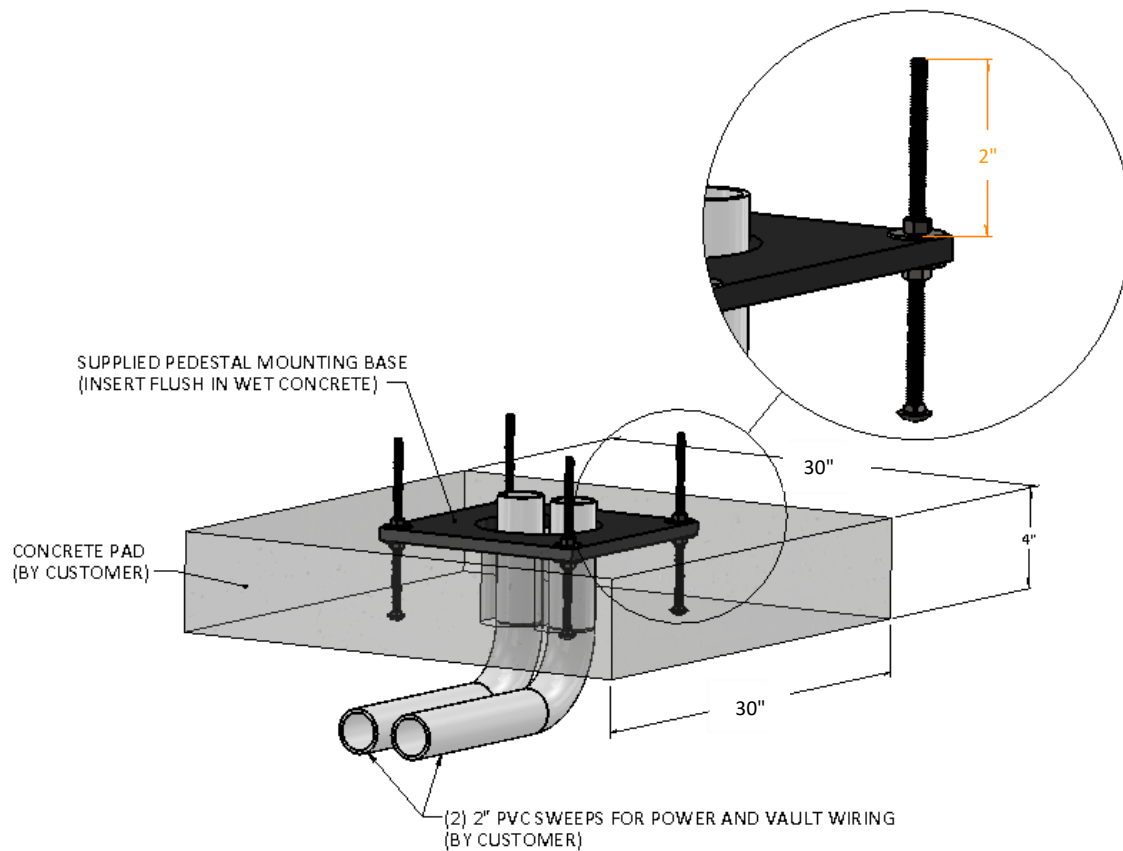


Figure 2: Control Panel Pad Detail

Installation Notes

- Panels to be located within 150 ft. from the vault. Installation at a distance greater than 150 ft. site will require an extended wiring package option, separate output filter, and larger concrete pad. For these installations extend the pad width to the right of the panel by 16 in. (36 in. total width). Control panel location on pad should remain to left.

Equipment Overview

Drainage Piping Components

Air/Water Separator

The air/water separator is located between the SubAir® Vault and the airline connection to the subsurface drainage matrix. The air/water separator effectively uses gravity and inertia to separate any airborne water from the air before it reaches the SubAir® vault.



Figure 3: Air/Water Separator Assembly (SubAir® Part Number : 50040A for 4" or 50060A for 6")

Dual Valve Assembly

The dual valve is a patented valve that automatically engages during SubAir® operation and isolates the green drainage from the storm sewer system. The valve uses air flow in either direction to seat the check-ball against the face of the inlet or outlet pipe, effectively stopping flow through the valve. In vacuum mode water, will accumulate on top of the ball until the weight of the vertical column of water exerts more pressure downward on the face of the ball than the SubAir® unit is applying upward holding the ball against the face of the pipe. When this occurs, the ball is forced away from the pipe face and up in the overhead chamber where it is trapped until the water has finished draining. After this the ball then falls back down into the air stream and is pulled back up against the seat. Valve operation in pressure mode is very similar; however, it is the buoyancy force of the ball surrounding by water that lifts it from the outlet pipe allowing the water to pass. A dual valve must be located on every drainage outfall.

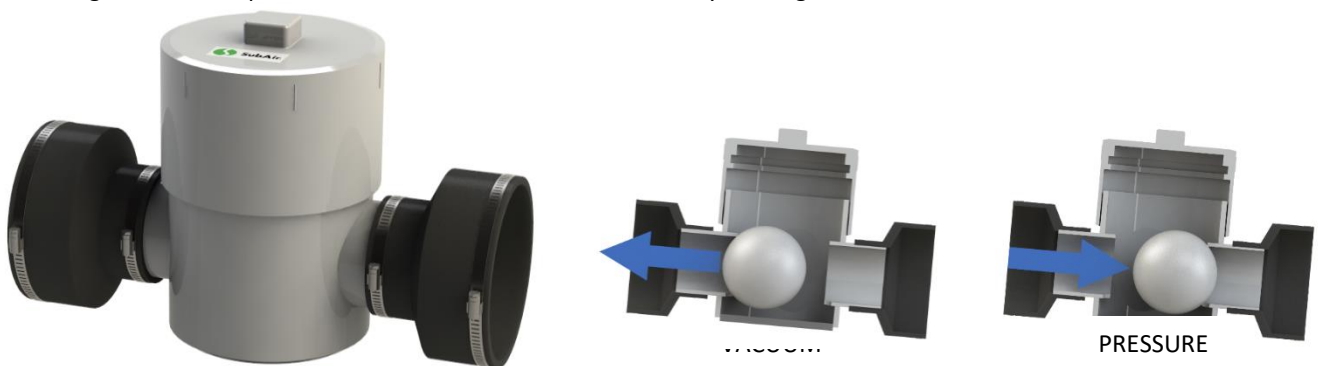


Figure 1: Dual Valve Assembly (SubAir® Part Number: 51040D for 4", 51060D for 6" or 51046D for 4" to 6")

Vault Assembly Components

Aeration Fan Assembly (Motor and Blower)

The aeration fan is a centrifugal blower located within the in-ground vault. This assembly consists of a motor mounted directly to a pressure blower. The fan motor is controlled by a variable frequency drive (VFD) to provide fan speed control for optimized performance and motor protection.

Submersible Pump Assembly

The submersible pump assembly consists of the submersible pump, discharge pipe, and check valve. Should water accumulate in the vault, the submersible pump senses that water is present then pumps the water from the vault to a final discharge point.

Air-Flow Reversing Valve (Diverter Valve)

The air-flow reversing valve is an automated valve that allows the system to operate in "Pressure" or "Vacuum" mode. This valve is a four (4) port air-flow reversing valve with a paddle-shaped diversion component located within the valve body.

Diverter Valve Actuator

The diverter valve actuator is a two-way fail-safe electric actuator that controls the position of the air-flow reversing valve.

Float Switch

The float switch is a safety switch located on the floor of the in-ground vault. This switch prevents blower motor operation when elevated water levels occur inside the vault. This protects the motor against damage from short circuiting and or mechanical overload if water is present inside the fan or inside the motor itself.

Magnetic Safety Switch

The magnetic safety switch is located on the viewport lid of the vault. This switch will not allow the unit to run when the viewport lid is displaced from the unit reducing the risk of electric shock.

Temperature Switch

The temperature switch is a safety device located on the blower housing. This switch senses leaving air temperatures and will not allow the unit to run when internal temperatures are too high. This protects the motor and vault assembly from excessive heat.

Silencer Assembly

The silencer assembly is located on the intake/exhaust port. This device is used to attenuate air noise traveling through the intake/exhaust port.

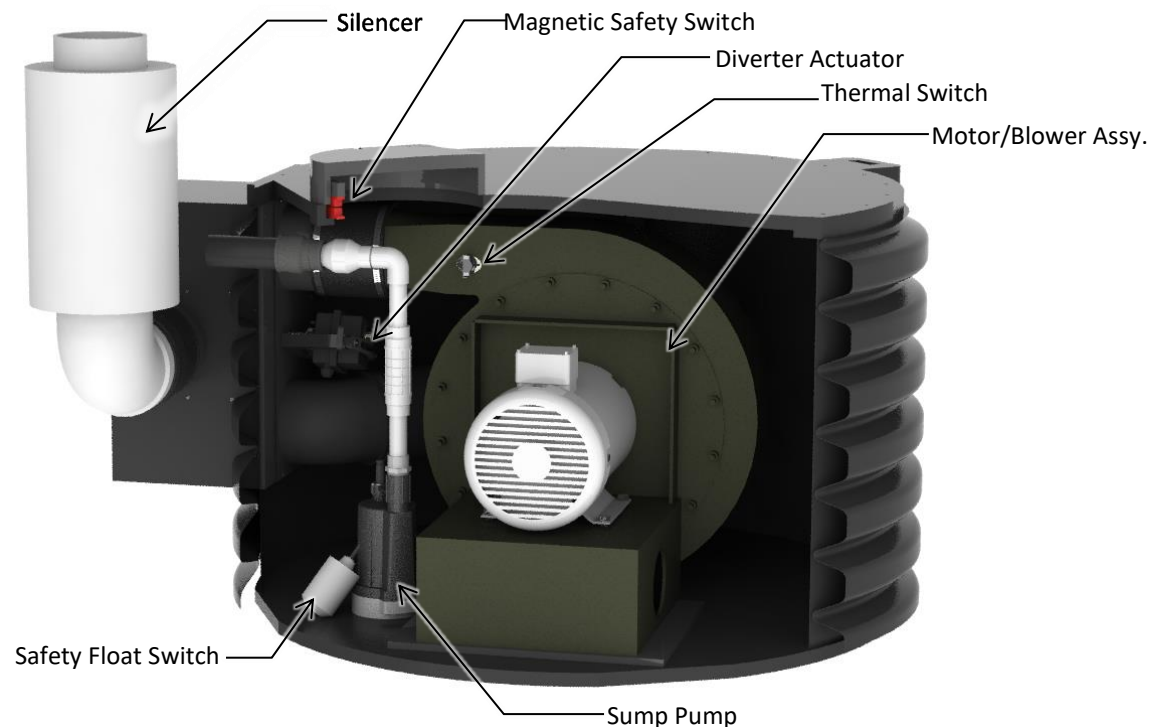


Figure 2: SubAir® Vault Assembly Component Diagram

SubAir® Vault Parts List

Item	SubAir® Part Number	Description	Qty
1	67000B	Silencer	1
2	83440A	Magnetic Safety switch	1
3	84145A	Temperature Switch	1
4	86040A	Motor/Blower Assembly	1
5	89380A	Float Switch	1
6	89220B	Submersible Pump	1
7	83170C	Diverter Actuator	1

SubAir® Control Panel

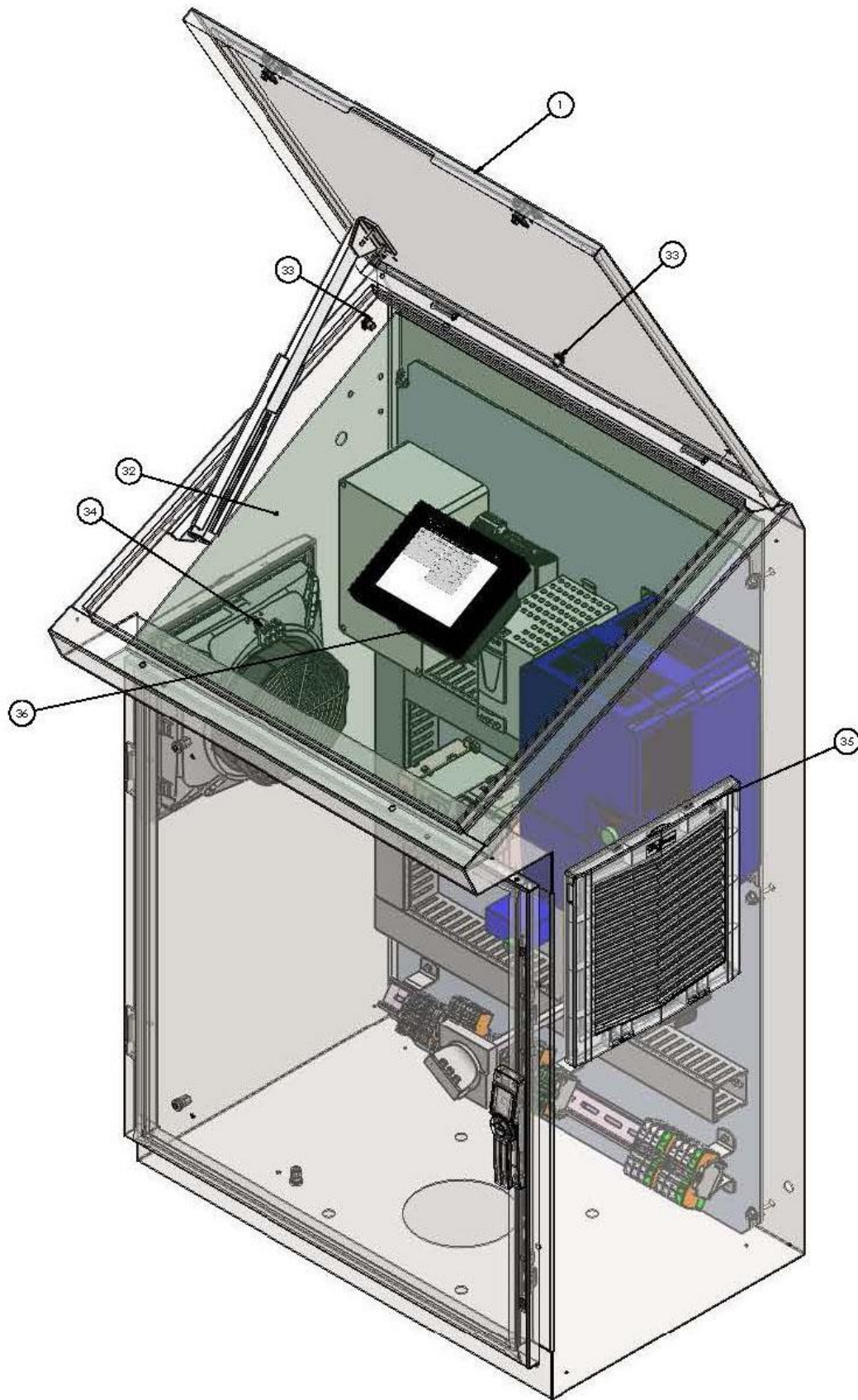


Figure 6: New Control Panel Component Diagram

SubAir® Control Panel

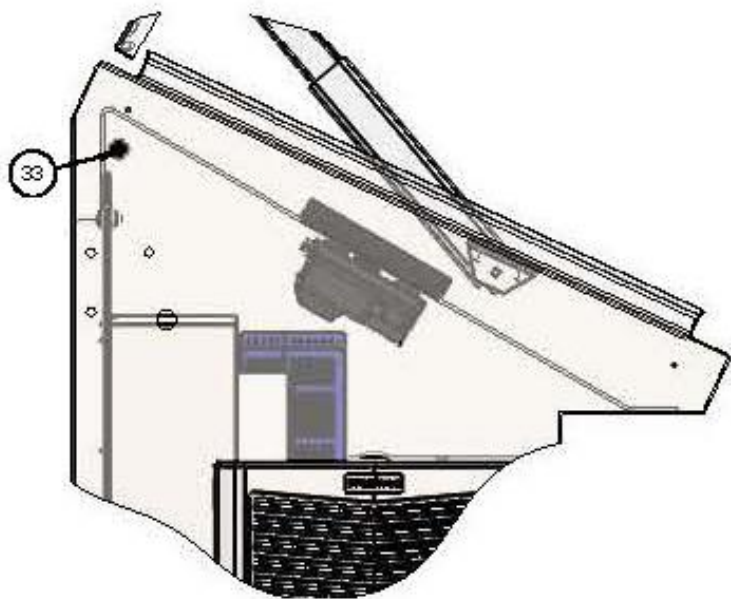


Figure 7: New Control Panel Component Diagram

New Control Panel Electrical Back Plate

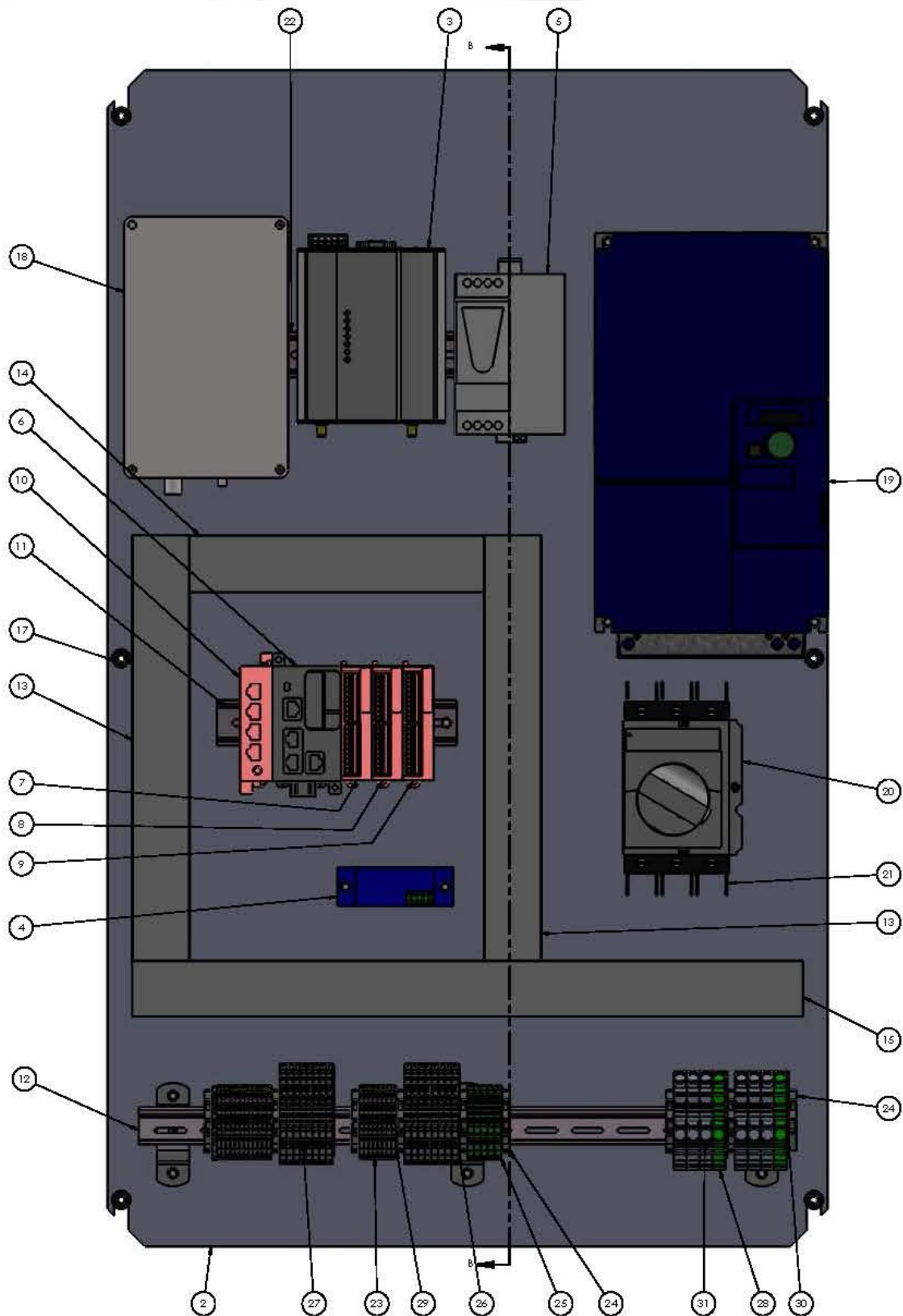


Figure 8: New Control Panel Electrical Component Diagram

New Control Panel Electrical Back Plate

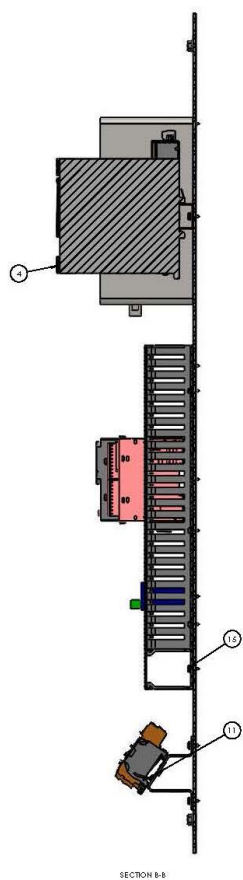


Figure 9: New Control Panel Electrical Components

New Control Panel Parts List

ITEM NO.	QTY.	DESCRIPTION	PART NUMBER
1	1	PROUNE GOLD SERIES DESK CONSOLE	HOFFMAN-PENTAIR PGLD1074DC
2	1	ELECTRICAL BACK MOUNTING PANEL	BACK PANEL
3	1	ELPRO 24SU-E WIRELESS ETHERNET MODEM	EATON 24SU-E
4	1	D.C. CURRENT TRANSDUCER	FLEX-CORE DTD-420-24U-U-SP
5	1	10A POWER SUPPLY	SCHNEIDER ELECTRIC AB1BRPS24100
6	1	LOGIC CONTROLLER, MODICON M251	SCHNEIDER ELECTRIC TM251MESE
7	1	4 ANALOG INPUT, 12 BITS, TMB MODULE	SCHNEIDER ELECTRIC TM3A4G
8	1	24VDC, 16 DIGITAL INPUT, TMB MODULE	SCHNEIDER ELECTRIC TMBD116G
9	1	16 DIGITAL OUTPUT RELAY, TMB MODULE	SCHNEIDER ELECTRIC TMBDQ16RG
10	1	NETWORK MODULE	SCHNEIDER ELECTRIC TM4ES4
11	1	35mm DIN RAIL, 1.5mm TALL, x186.5mm Long	WEIDMULLER # 1071680000
12	1	35mm DIN RAIL, 7.5mm TALL x510.5mm Long	WEIDMULLER # 0514500000
13	2	1 1/2" x 2" WIRE WAY, LIGHT GRAY VINYL, NARROW SLOTTED DUCT, WITH COVERS, PANDUIT CAT. No. C1.5LG6	13' Long, PANDUIT # F1.5x2LG6
14	1	1 1/2" x 2" WIRE WAY, LIGHT GRAY VINYL, NARROW SLOTTED DUCT, WITH COVERS, PANDUIT CAT. No. C1.5LG6	9' Long, PANDUIT # F1.5x2LG6
15	1	1 1/2" x 2" WIRE WAY, LIGHT GRAY VINYL, NARROW SLOTTED DUCT, WITH COVERS, PANDUIT CAT. No. C1.5LG6	20.5' Long, PANDUIT # F1.5x2LG6
16	30	ZINC PLATED, EXTERNAL HEX HEAD DRILLING SCREW, #6, 3/8" LONG	McMASTER CARR #90064A146
17	6	M6x1 SERRATED FLANGE LOCKNUT	McMASTER CARR #96194A101
18	1	SOIL SCOUT BASE STATION	SOIL SCOUT BASE STATION
19	1	ATV320 200V 3ph VARIABLE SPEED DRIVE	ATV320D11MBC
20	1	CB DOOR MOUNTED ROTARY HANDLE	Schneider S29340
21	1	POWERPACT H CIRCUIT BREAKER - 80A - 3P - 600V - 14kA	SCHNEIDER HDL36080
22	1	35mm DIN RAIL, 1.5mm TALL, x330.5mm Long	WEIDMULLER # 1071680000
23	20	CONDUCTOR THROUGH TERMINAL BLOCK	WAGO 2002-1201_HI
24	9	END STOP	WAGO 249-116_HI
25	2	FUSE ENDPLATE	WAGO 2002-1992_HI
26	16	2 - CONDUCTOR FUSE TERMINAL BLOCK	WAGO 2002-1981_HI
27	2	LARGE GROUND BLOCK	WAGO 2010-1207_HI
28	5	2 - CONDUCTOR TERMINAL BLOCK	WAGO 2002-1207_GND
29	3	END PLATE	WAGO 2002-1292_HI
30	2	LARGE ENDPLATE	WAGO 2010-1292
31	6	CONDUCTOR THROUGH TERMINAL BLOCK	WAGO 2010-1201_HI
32	1	GOLF ELITE TOP HMI PANEL PLATE	Golf Elite Top HMI Panel Plate
33	2	PANEL MOUNT INDICATOR LIGHT, WATER TIGHT, BLUE	McMASTER CARR #2779K203
34	1	HF10 1.59 CFM SIDE-MOUNT FILTER FAN	HOFF HF1024414
35	1	HF10 SIDE-MOUNT FILTER	HOFF HG1000404
36	1	HMI 5.7" TOUCH SCREEN	SCHNEIDER HMISTU855
37	3	DIN RAIL ANGLED MOUNTING ADAPTER	McMASTER CARR 8961K220
38	2	RTD TEMP SENSORS	ALUED 3706587
39	5	3' ETHERNET CABLES	SHEALY
40	9	BUSSMANN - 2 AMP	AMAZON VP/ATM2-RP
41	6	BUSSMANN - 4 AMP	AMAZON VP/ATM4-RP

SubAir® Operation

Basic Operating Modes

Vacuum

During vacuum operation air is pulled from the atmosphere down through the soil profile and into the drainage system. Vacuum operation should always be used when ambient air temperatures are in a favorable range for the turf and will generate a complete soil gas exchange much faster than is possible with pressure mode. Vacuum mode will also release uneven pockets of moisture from the soil profile resulting in more even treatment.

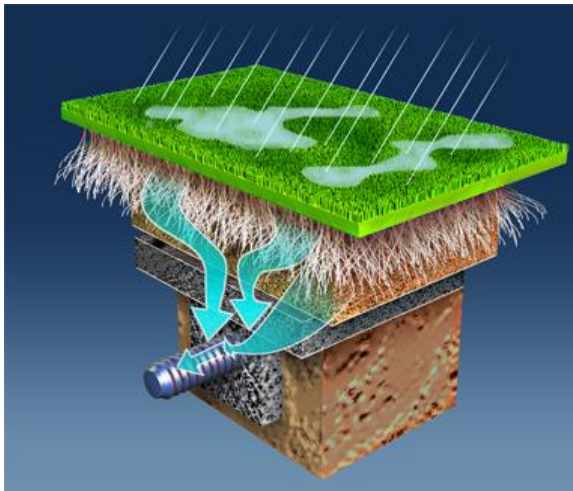


Figure 10: Vacuum Mode Air-Flow Illustration and Control Panel-Vacuum

Pressure

When the system is in pressure mode, air is forced into the drainage and up through the soil profile. Pressure mode is ideal whenever soil temperatures are more favorable to the turf than ambient air temperatures. Since excessive pressure beneath the surface of the green can lift poorly rooted areas of turf, pressure mode operates a reduced fan speed to limit the pressure applied to the soil profile.

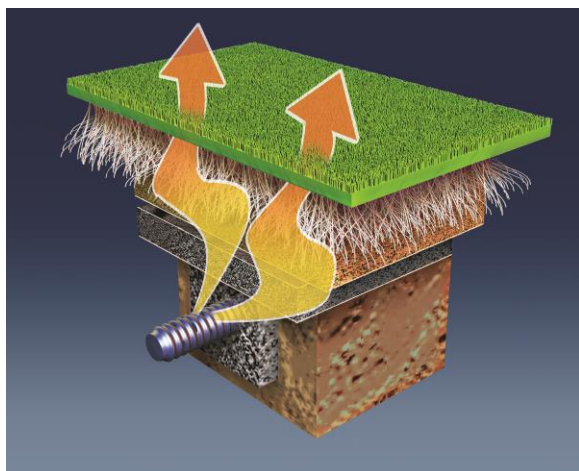


Figure 11: Pressure Mode Air-Flow Illustration and Control Panel – Pressure

Intermittent Mode

The intermittent mode is designed to automatically displace toxic gases and excess moisture as they accumulate and maintain optimum respiration pore space and soil gas compositions 24 hours a day, every day. Proper configuration and diligent utilization of the intermittent feature is the only way to reap the full benefits of the SubAir® system. The intermittent mode also provides maximum effectiveness with minimal energy consumption for overall reduced operating costs (see Figure 10).

The intermittent mode uses an asymmetric timer relay and a two-stage thermostat to control execution intervals and operation modes. The asymmetric timer allows different values to be assigned to the on-times and off-times. To properly configure your timer set the on-time value to 2 times the number of minutes it takes to move air from the surface to the gravel layer in vacuum mode. This can be estimated by dividing the green's square footage by 1000. The off-time value will vary throughout the year and is based on your specific soil respiration rates, CO₂ production, soil moisture, temperature, etc. However, university research and field testing indicate that 2 hours is generally a good starting point during high growth periods. Ideal settings will provide just enough on-time to generate a complete soil gas exchange and have an off-time that initiates operation just prior to soil gases reaching toxic compositions.

The thermostat dictates the mode of operation (Pressure or Vacuum) based on the ambient air temperature, and the general "ideal" root zone temperature ranges for cool or warm season grasses. The standard thermostat settings for cool and warm season grasses, and decision matrix are given in Figure 11 below.

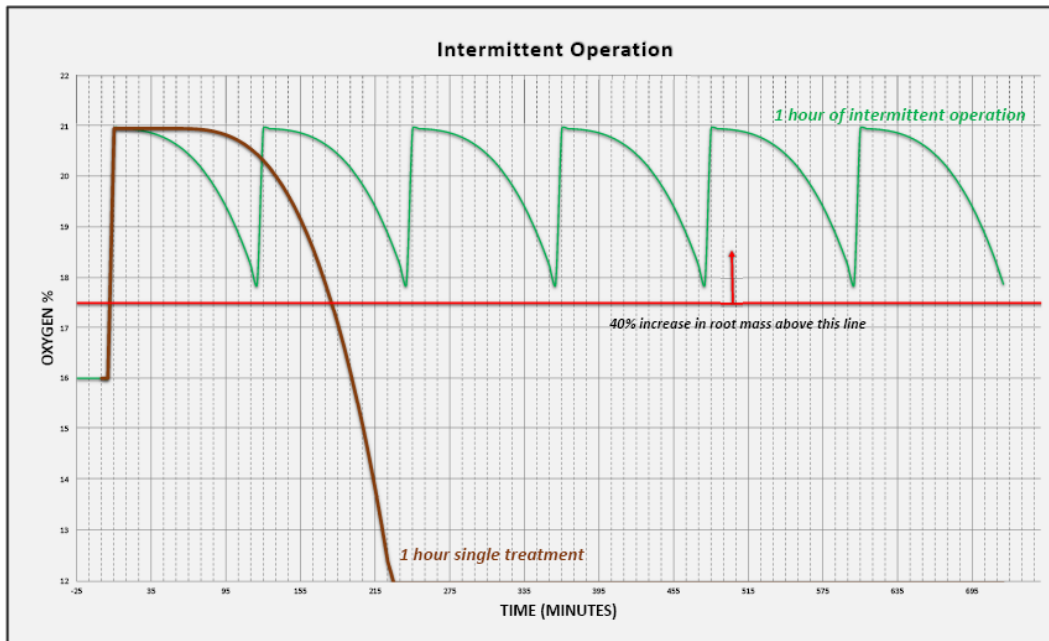


Figure 12: Intermittent Operation

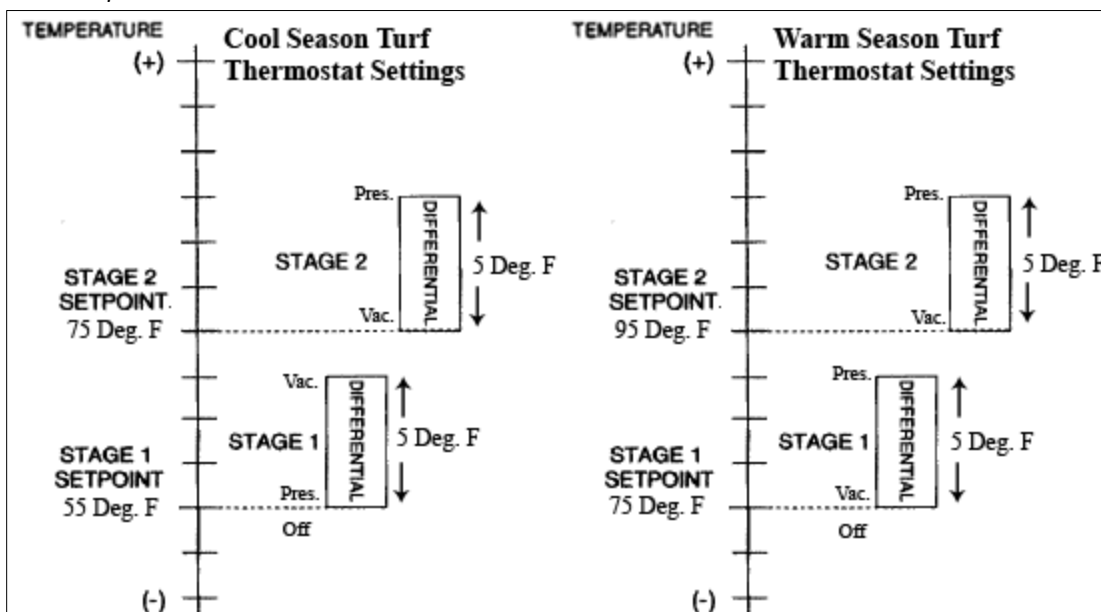


Figure 13: Intermittent Thermostat Settings

Detailed Theory of Operation

General Moisture Control

Contrary to popular belief, subsurface aeration technology is not simply a “water removal” tool, but rather is an extremely effective pore space management tool. One of the major benefits of SubAir® is the ability to clear excess water from the soil profile. The amount of water the SubAir® unit is capable of removing is directly proportional to the amount of vacuum that can be applied to the gravel layer. Moisture removal with a SubAir® units is comprised of two phases – the desaturation phases, and the evaporation phase. When vacuum operation is initially started the pressure differential across the soil profile quickly dislodges moisture from the pore space where the capillary forces are not stronger than the pressure gradient generated by the blower. This is considered the desaturation phase. The SubAir® will clear whatever percentage of the pore space it can clear after the first 5-15 minutes of operation, effectively “de-saturating” the profile. After this initial operation period the pressure differential is not strong enough to break the capillary forces holding the remaining water in the profile, and evaporation becomes the primary the mechanism driving moisture reduction. This is the “evaporation stage”. During the evaporation phase moisture removal is still accelerated above that of a non-SubAir® green, however the rate is drastically slower than the initial desaturation phase. A good analogy would be considering the amount time required to drain a 5-gallon bucket with a small pump (de-saturation stage), vs a fan blowing air across the surface of the water (evaporation stage), vs evaporation with no fan (no SubAir®). Thus, when using the SubAir® for moisture removal expect a large initial drop in soil moisture, followed by a much, much slower and more gradual reduction. This makes it much more difficult to “dry out” a green than most initially think.

Rain/Irrigation Cycles

After a rain or irrigation event the turf is often saturated with moisture. Despite the obvious moisture requirements of the plant, extended periods of saturation prevent proper root and soil respiration, and foster disease. The SubAir® System should be run in vacuum to de-saturate the profile as soon as the plants have had time to make proper use of the available moisture.

The SubAir® unit can remove water from a saturated putting green 36 times faster than gravity draining alone (6,000 sq. ft. green). Running the units in advance, and during a rain event will result in significant reductions in the time required to return to playing conditions, as well as return the profile to aerobic conditions.

Flushing

By utilizing the SubAir® System in conjunction with flushing events, water usage, and the time necessary to thoroughly flush the green can be greatly reduced. Begin watering the green just as you normally would for a flush; however, as soon puddling begins to form on large portions of the green start the SubAir® in vacuum. You should see the puddles vanish within seconds if the profile was properly saturated. If the puddles linger, which indicates air is still able to move unobstructed in some portion of the green, then stop the SubAir®, wait a few more minutes (irrigation still running), and repeat the process. Once you see the puddles vanish quickly stop the irrigation and let the SubAir® continue to run in vacuum for 5-15 minutes to insure all excess moisture is removed from the profile, and the soil has returned to healthy aerobic conditions.

Chemical Applications

By pulling liquids down into the surface on contact, vacuum operation drastically reduces run-off, and surface evaporation during chemical applications and irrigation cycles.

Syringing

Using the pressure mode in conjunction with syringing will provide increased cooling effect as well as reduce infiltration and inadvertent soil wetting. To do this, turn on the SubAir® in pressure 2-3 minutes before starting the syringe and turn it off 2-3 minutes after the syringe is finished.

Aeration and Gas Exchange

Oxygen in the root zone is critical for plant growth and root functionality. Over time oxygen is consumed, and gases such as carbon dioxide, methane and hydrogen sulfide gradually accumulate in the root zone as aerobic and anaerobic microorganisms metabolize organic matter. These gases can develop in concentrations high enough to inhibit root growth and affect overall plant health in a matter of hours during high growth rate periods.

Traditional surface aeration methods are very effective for replacing a relatively small percentage of the total profile volume with clean mix but have little effect on the soil gases outside the actual hole made by a mechanical aerator. This is because no mechanism other than diffusion exists to drive air laterally through the undisturbed soil around each hole. The SubAir® System forces air through the root zone under vacuum and/or pressure. This quickly purges all soil gases and replaces them with fresh air. The infusion of oxygen

rich air will boost microbial activity through the entire soil profile maintaining maximum permeability and extending the service life of the green's mix.

For a typical USGA or California style green, running the SubAir® system is an efficient method to affect change of gas levels in the root zone. Research has shown that a typical green experiences a 50% reduction in soil gases in the first 3-5 minutes of operation. However longer run times may be required depending on soil composition, age of the green, environmental conditions, and frequency of system operation. The root zone can return to its non-aerated gas composition in as little as three to four hours or as long as one to three days after last operating the SubAir® system. The rate depends on the amount of organic material, soil temperature, soil permeability, microorganisms, etc. in the root zone. When the SubAir® system is operated routinely, such as in the intermittent mode, the root mass is often as dense at depth as it is at the surface. With this deeper, denser and healthier root system, the turf-grass is better equipped to survive general environmental stress and disease. All this can be accomplished without any disturbance to the playing surface.

SubAir® **does not claim** to eliminate the need for surface aeration; it is still needed to remove organic material from the surface that can effectively "seal off" the green. However, SubAir® can reduce the number of times that surface aeration needs to be performed and can reduce the size of the tines used so that the process is less disruptive to the surface and subsequently less disruptive to play.

Temperature Moderation

SubAir® Systems can provide some limited temperature moderation in the root zone during periods of extreme heat or cold. The SubAir® Systems take advantage of the thermal mass of soil profile during these periods and use it to condition the hot or cold ambient air before it reaches the root zone. Typically, the soil and gravel layer are cooler in the summer and warmer in the winter than ambient air temperatures. Consequently, when run in the pressure mode, the air is heated or cooled to the same temperature of the gravel and soil before reaching the root zone. Due to the extremely small thermal mass of the air relative to the soil, near continuous operation is required to achieve measurable results. Both field and laboratory tests have shown that with continuous operation the SubAir® units alone are capable of 2-4 deg. F. changes in temperature during the hottest/coolest times of the day.

Although the sub-soils can provide a significant source of heating and cooling, to get maximum effectiveness it must be utilized properly. During hot weather if the nighttime air temperature ever drops below the average soil temperature then it is recommended to operate vacuum during this coolest part of the night. As soon as ambient air temperature rises above that of the soil, switch operation over to pressure and the system will begin pushing the cooler subsurface air back up through profile to cool not only the soil but the surface canopy as well.

Similarly, during cold weather operating in the vacuum mode during the warmest part of the day will pull the warm air into the soil. This will help keep the soil microbes active and increase the cool season health of the turf. During the coolest part of the day, running the system in pressure will push the air through the warmer soil profile back up to the surface region, thus transferring the maximum amount of available heat to the root zone. Pressure operation will also help reduce the severity and frequency of freezing.

SubAir® Operation

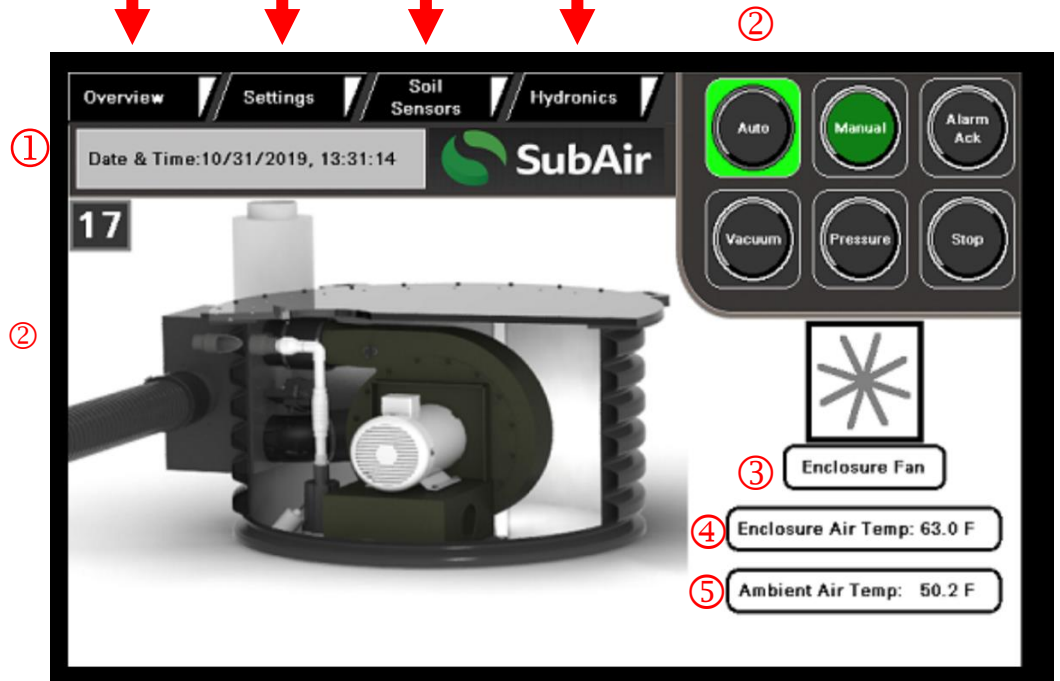
Programming the Basic Operating Modes

Home
Screen



Operations shown:

- Date/Time ①
- Current Operation Mode ②
- Enclosure Fan On/Off ③
- Enclosure Air Temp ④
- Ambient Air Temp ⑤



Setting Manual Operations

Select the Manual button to set onetime operation.

Select **Vacuum** or Pressure for operation.

Select **Vacuum** and a Vacuum Mode and Time Setpoint window will appear.

*Note that 0 minutes will run the operation indefinitely.

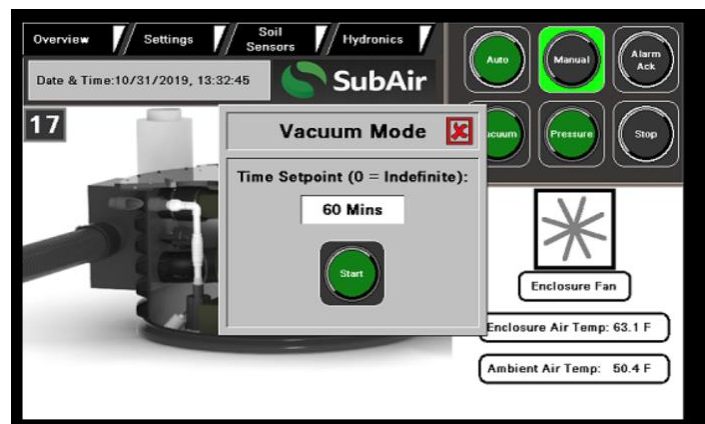
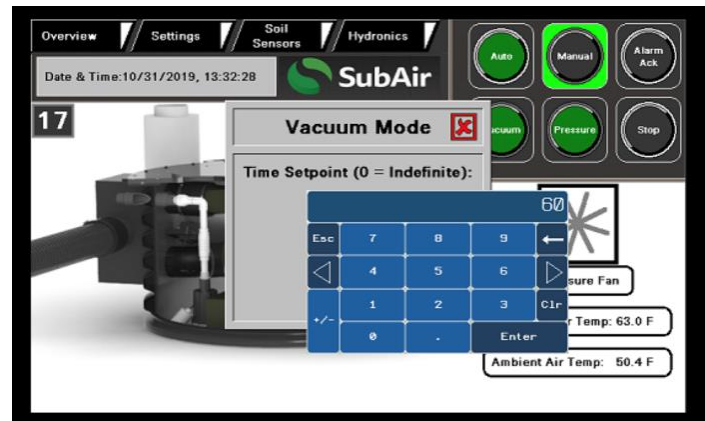
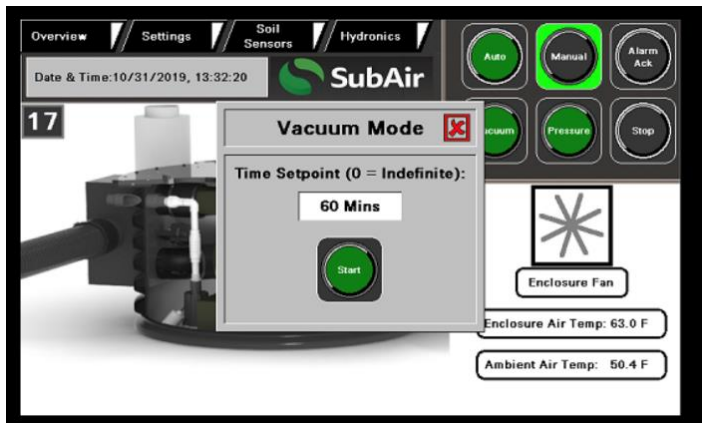
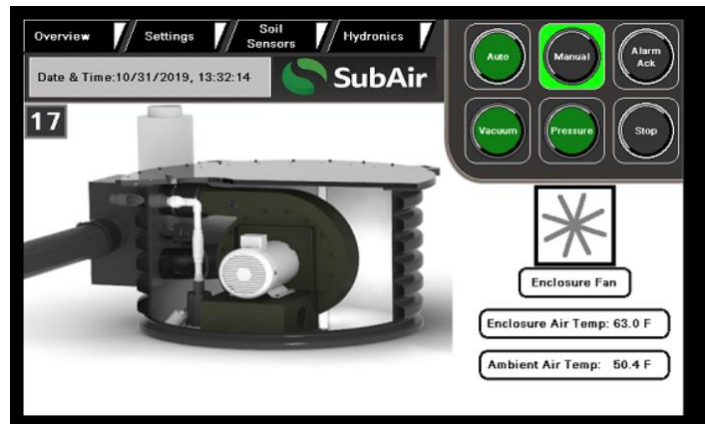
*All time is set in minutes (2 hours are 120 minutes)

Press “Mins” button and a Key pad will appear to set Run Time.

Enter the number of minutes for the system to run and press ENTER.

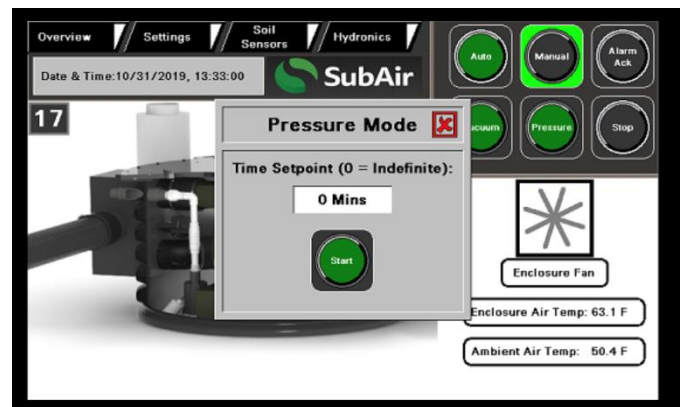
The Vacuum and Time Setpoint window will show the time set. Press Start to run equipment.

Home screen will return and show remaining operation time. Manual settings run one time and scheduled operations will resume once complete.



Select the Manual button to set one-time operation.

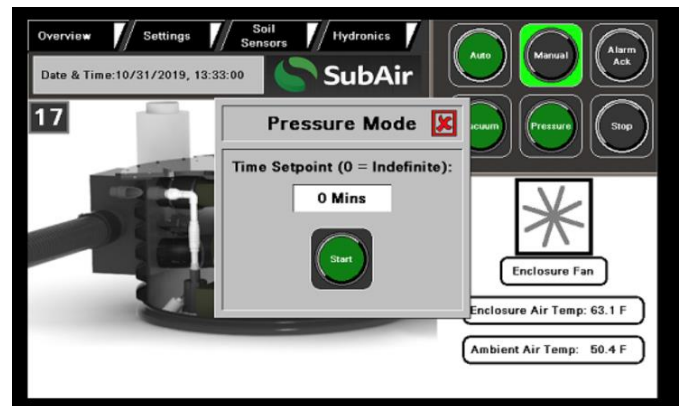
Select Vacuum or **Pressure** for operation.



Select Pressure and Pressure Mode Time Setpoint window will appear.

*Note that 0 minutes will run the operation indefinitely.

*All time is set in minutes (2 hours are 120 minutes)



Press "Mins" button and a Key pad will appear to set Run Time.

Enter the number of minutes for the system to run and press ENTER.



The Pressure and Time Setpoint window will show the time set. Press Start to run equipment.

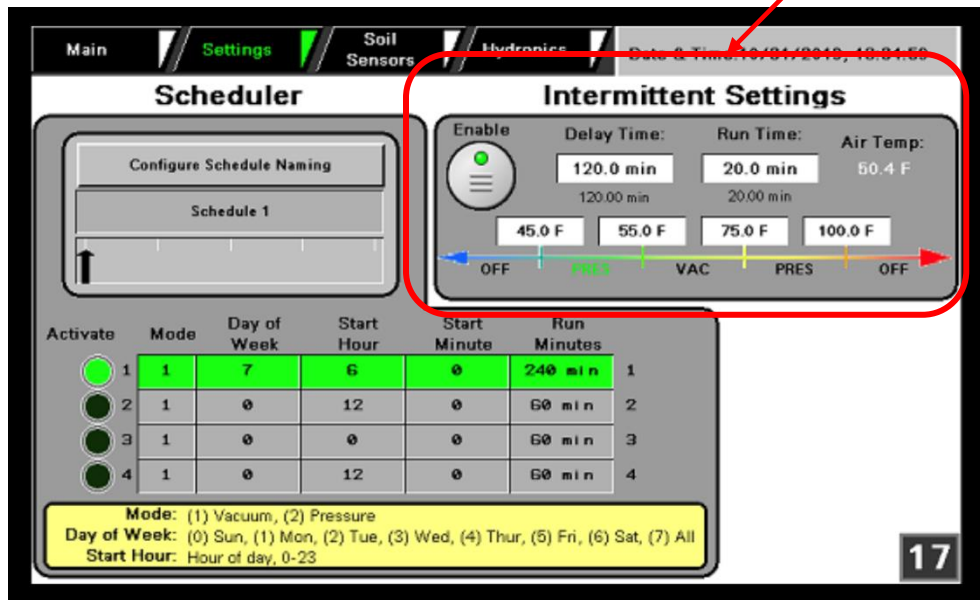
Home screen will return and show remaining operation time. Manual settings run one time and scheduled operations will resume once complete.



Setting Intermittent Operations

Select the Setting Tab - Scheduler and Intermittent Setting window will appear.

Actions and run times will appear in the Intermittent Setting box.



Approved Intermittent Run \Times and Temperature settings will be set when unit is commissioned.

Temperature settings and mode selection will be set when unit is commissioned.

Delay Time – Time between system run times

Run Time: time unit will run programmed operation.

To Adjust Delay Time:

Press box of minutes shown. A keyboard will appear. Enter in number and Press Enter.

To Adjust Run Time:

Press box of minutes shown. A keyboard will appear. Enter in number and Press Enter.

When all new settings are entered – **Press the Enable Button to save changes and activate.**

Setting Schedule Names and Operations

Select the Setting Tab – Scheduler and Intermittent Setting window will appear.

To Schedule Operations use the left side on the screen to create a schedule for specific time of day, number of days and mode of operation.

Scheduler

Configure Schedule Naming

Schedule 1

Activate	Mode	Day of Week	Start Hour	Start Minute	Run Minutes	
1	1	7	6	0	240 min	1
2	1	0	12	0	60 min	2
3	1	0	0	0	60 min	3
4	1	0	12	0	60 min	4

Mode: (1) Vacuum, (2) Pressure
Day of Week: (0) Sun, (1) Mon, (2) Tue, (3) Wed, (4) Thur, (5) Fri, (6) Sat, (7) All
Start Hour: Hour of day, 0-23

Intermittent Settings

Enable: ☒

Delay Time: 120.0 min
Run Time: 20.0 min
Air Temp: 50.4 F

45.0 F 55.0 F 75.0 F 100.0 F

OFF PRES VAC PRES OFF

17

Specific Schedule Names can be created for easy reference.
(Daily, Tournament, Spring, etc.)

Actions and Run Times will appear in the Schedule Setting box.

A reference box for codes appears at the bottom of the window.

Mode: 1 = Vacuum, 2 = Pressure

Day of Week: 0 = Sunday, 1 = Monday, 2 = Tuesday, 3 = Wednesday, 4 = Thursday, 5 = Friday,
6 = Saturday, 7 = All Days

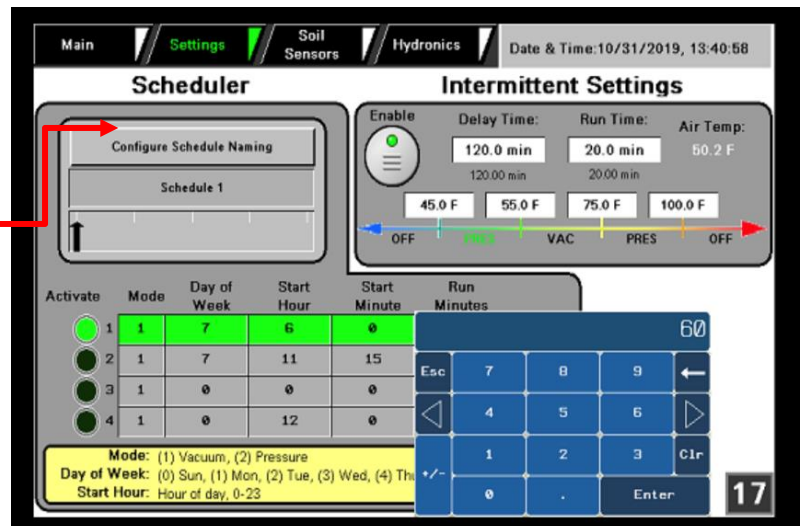
Start Hour: Hour of the day, 0-23 (military time 9:00 PM = 21)

Setting Schedule Names and Operations – cont'd

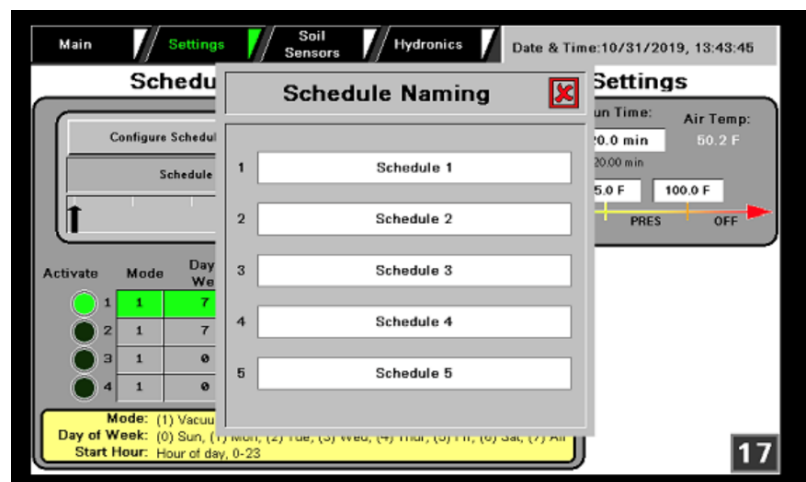
Multiple schedules can be saved to provide immediate changes in system operations.

Each schedule can be named and configured to specific operations.

To name schedules, press the Configure Schedule Name rectangle.

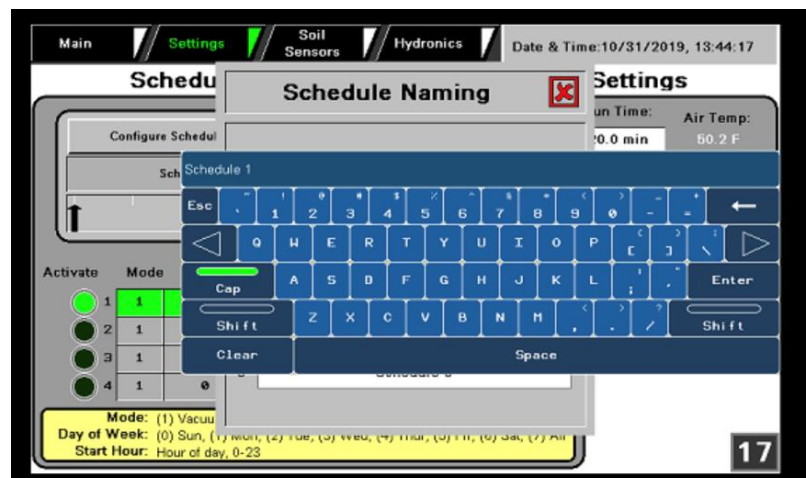


A Schedule Naming panel will appear with five (5) options.



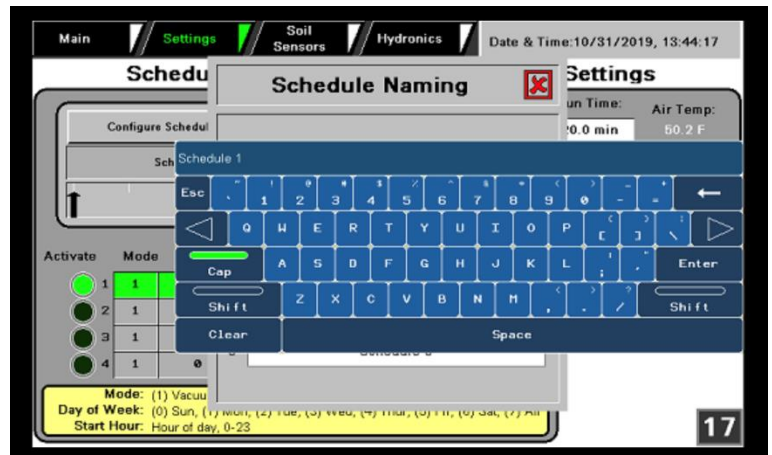
Press Schedule 1 to name schedules and a keyboard will appear.

Enter schedule name (ex: Tournament)

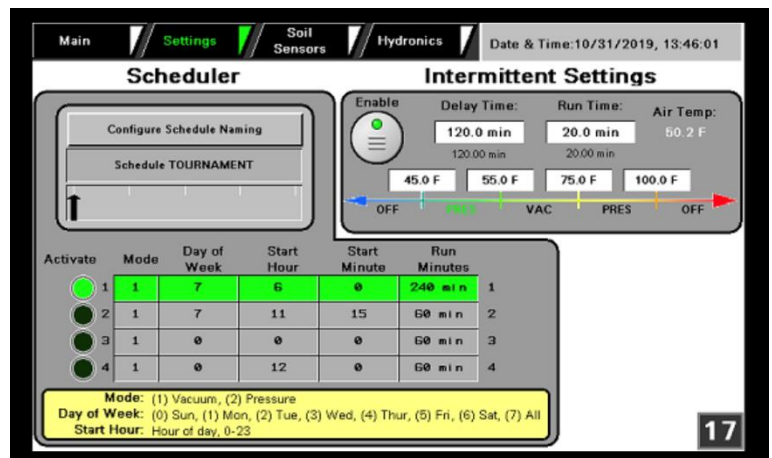


Setting Scheduling Names and Operations – cont'd

Type in Schedule Name (ex: Tournament) and press Enter.

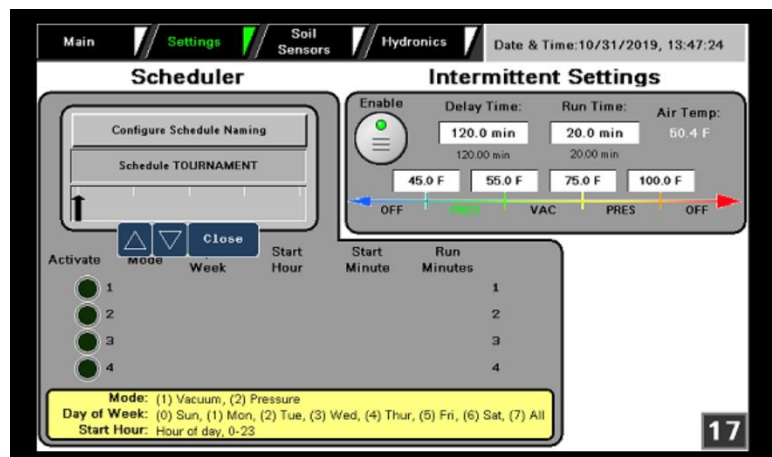


New name will appear in Naming box.



To select among multiple saved schedules,

Press the arrow in the Configure Schedule Naming box. Arrow keys will appear to move down the list of Schedule Names. Press Close when specific Schedule name appears.



Setting A Scheduled Program

Once a Schedule has been named continue with entering
Mode, Day of Week, Start Hour and Run Minutes

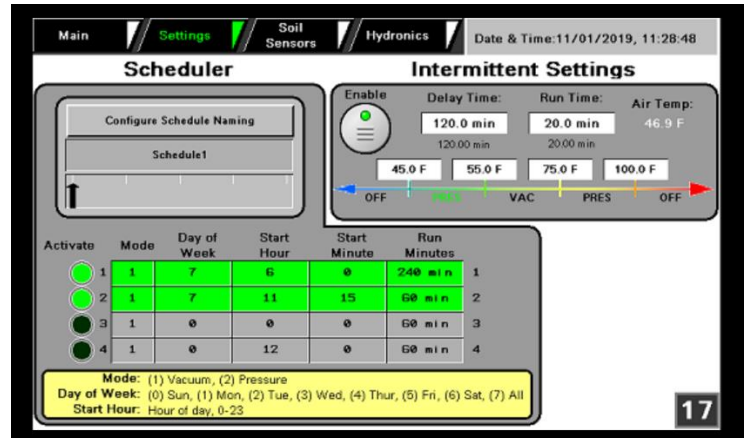
Column 1 is Mode – Vacuum or Pressure

Press the button/rectangle in the first Row under Mode column.

A Key pad window will appear.

Enter the Mode # and or specific day of week to operate and press Enter.

*Reference codes are at bottom of screen.
Select 1 for Vacuum or 2 for Pressure*



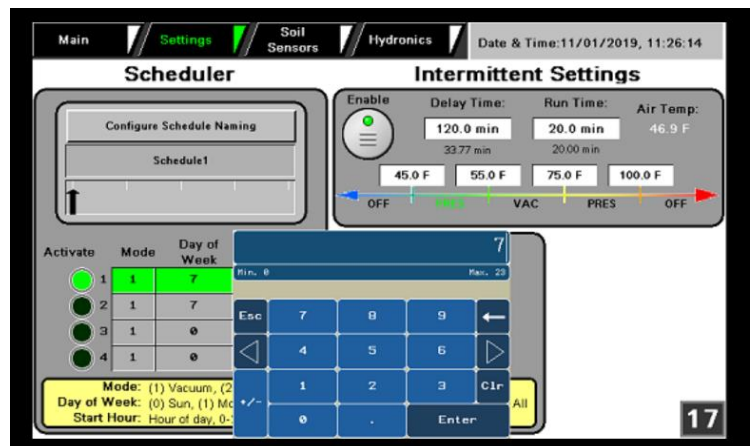
Column 2 is Day of Week.

Press the button/rectangle in the first Row under the Day of the Week.

A Key pad window will appear.

Enter number for specific day of week to operate and press Enter.

*Reference codes are at bottom of screen.
Select 0 = Sunday, 1 = Monday, 2 = Tuesday,
3 = Wednesday, 4 = Thursday, 5 = Friday,
6 = Saturday, 7 = All Days*



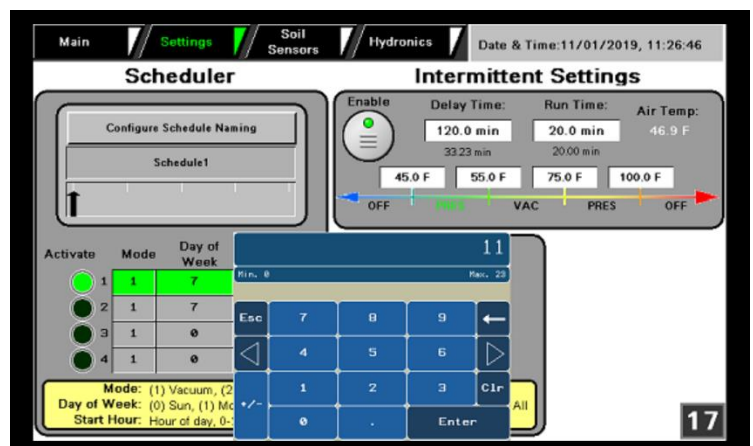
Column 3 is Start Hour.

Press the button/rectangle in the first Row under the Start Hour.

A Key pad window will appear.

Enter number for Hour of Day to start operating and press Enter.

Start Hour: Hour of the day, 0-23 (military time) example: 9:00PM = 21



Setting A Scheduled Program – cont'd

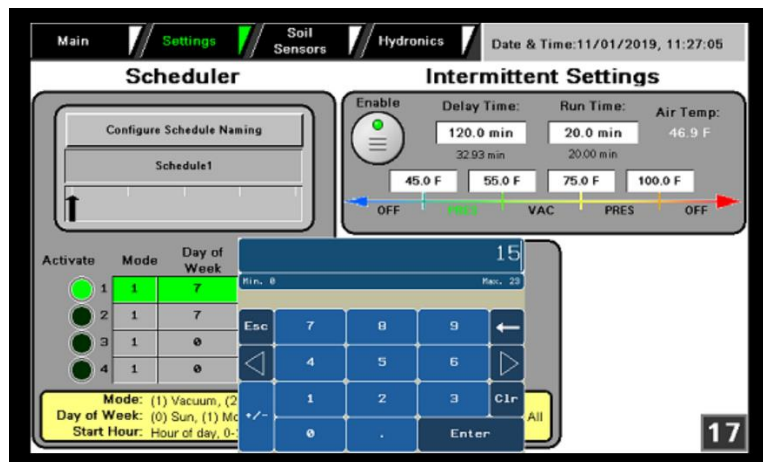
Column 4 is Start Minutes

Press the button/rectangle in the first Row under the Start Minutes.

A Key pad window will appear.

Enter minute within the hour for operation to begin.

Example: Run time to begin at 11:15 AM
Start Minutes will be 15.

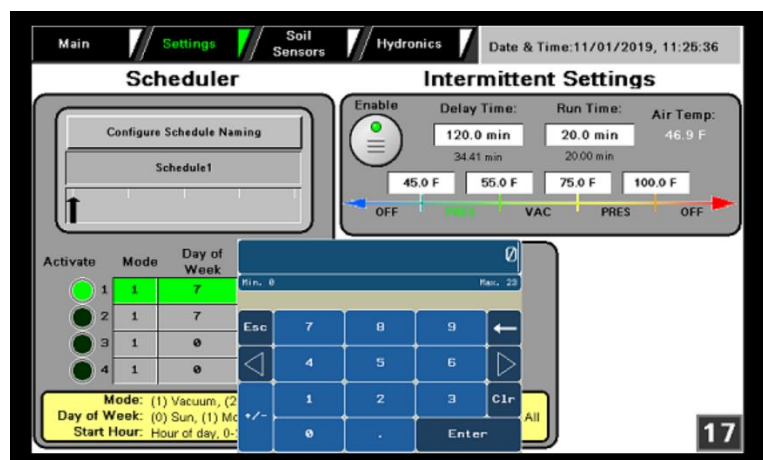


Column 5 is Run Minutes - the length of time for system to run.

Press the button/rectangle in the first Row under the Run Minutes.

A Key pad window will appear.

Enter number of minutes for how long operation will run and press Enter.

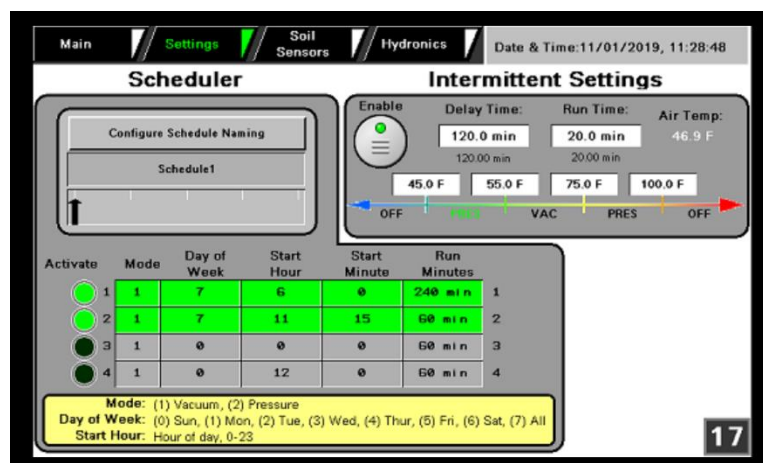


Press the ACTIVATE Button to save all entries.

Each row sets one run time, additional run times are entered in the next row.

Row 1 – Vacuum Mode, All Days,
Starts at 6 AM, Runs 240 minutes
Row 2 – Vacuum Mode, All Days,
Starts at 11 AM, Runs 60 minutes

The screen shown indicates Row 1&2 are active and will run programmed mode (vacuum) will run each day at designated time and duration.



Setting A Scheduled Program – cont'd

Home Screen View of SubAir System During Operation

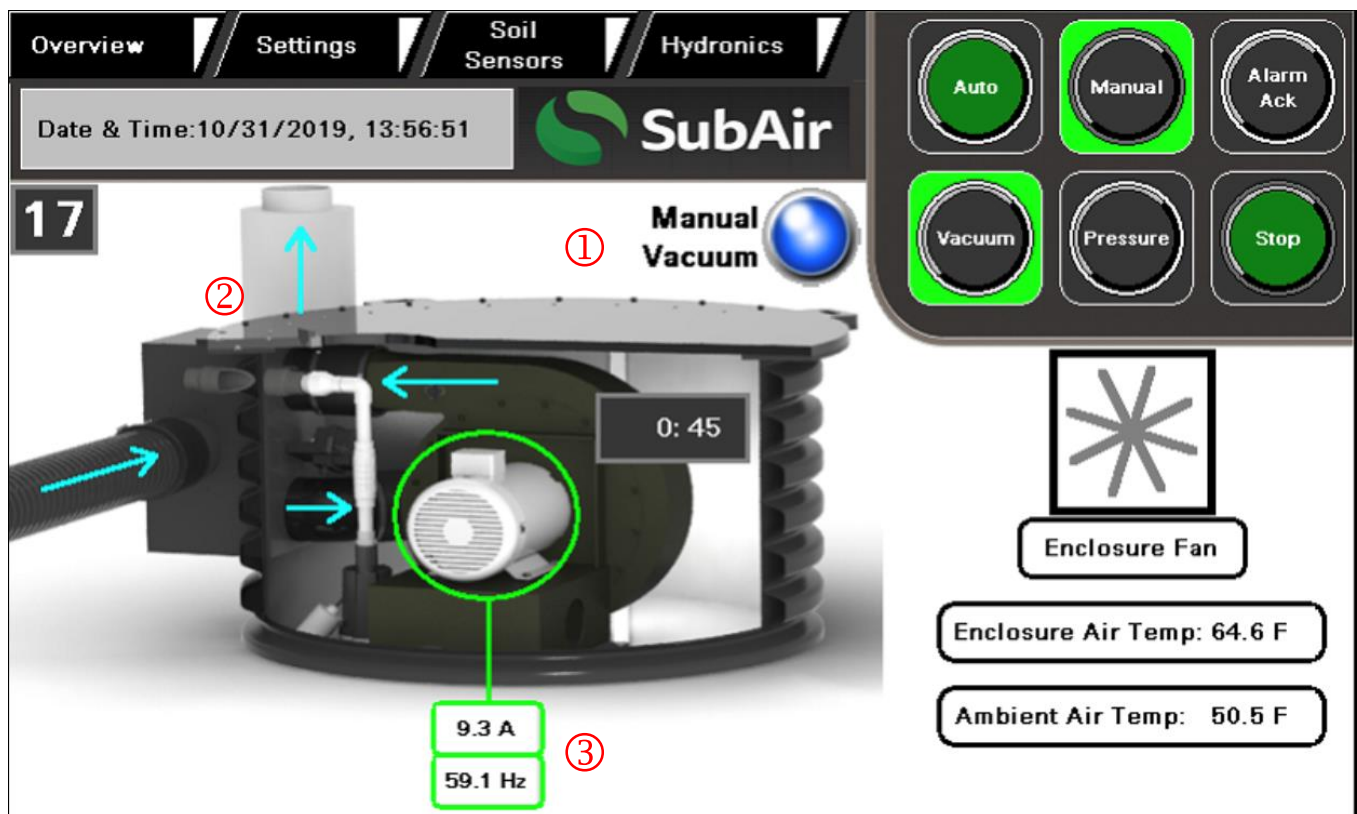
Operation①

Mode①

Air Flow Direction②

Amperage③

Hertz③



Fault and Protection Features

Sump Pump & Maintenance Cycle Operation

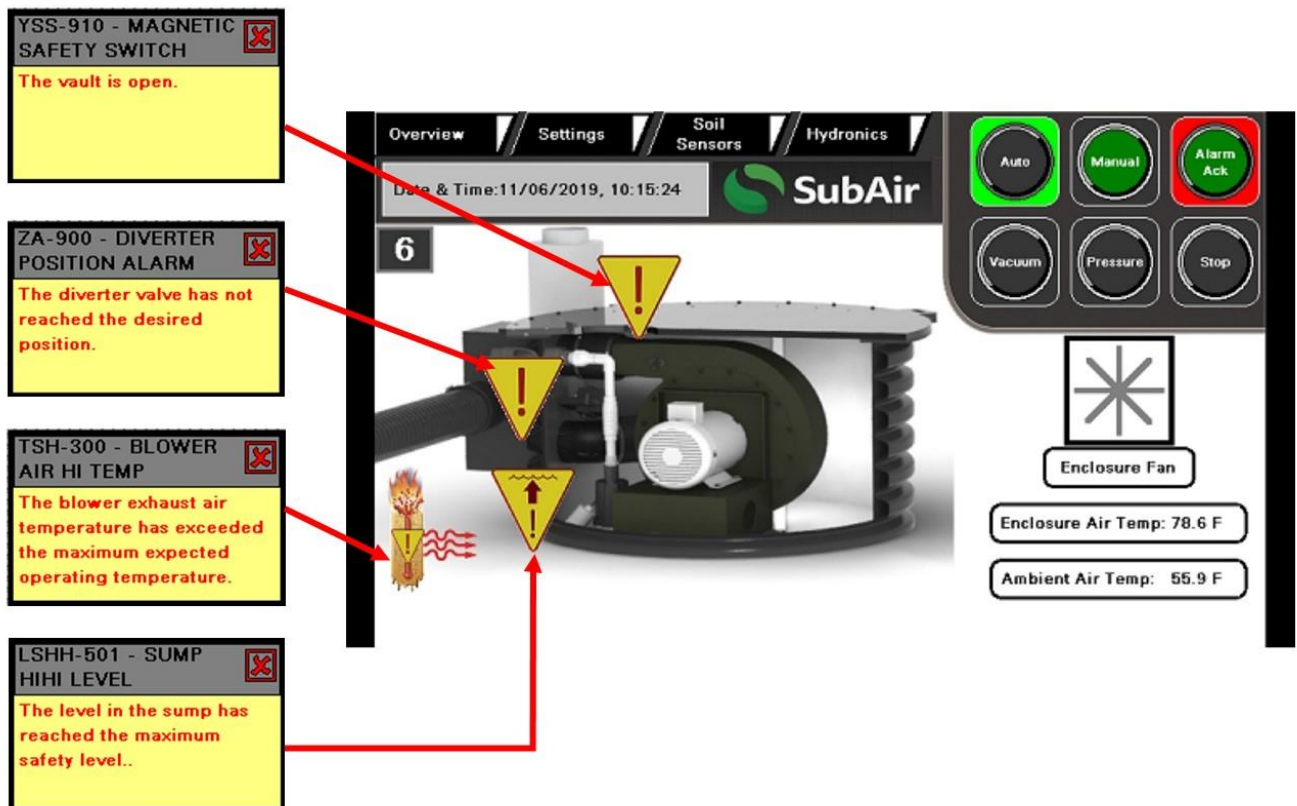
It is imperative that the control panel be left fully powered at all times after installation. Power should be removed only when performing maintenance inside the vault or control panel. The sump pump located in the vault is vital to protecting the blower motor from elevated water levels and will cease operation if power is removed. Likewise, the maintenance cycle, which periodically runs the blower in reverse at 16% speed to lubricate the bearings and cycle the diverter actuator, will cease to function. If power is removed for any reason other than during maintenance, it will prevent these protective features from operating and will void the equipment warranty.

Safety/Fault Circuit

The safety circuit passes an electrical signal through the vault's magnetic safety switch, float switch, and then back through the VFD's fault contract. If the circuit is broken at any point the fault light on the side of the control panel will illuminate. The unit will be inoperable when the fault light is on.

Over-Current Protection

The SubAir® control panel is equipped with primary (line) circuit breaker on the incoming power leads. The VFD serves as the protective device for the motor leads and will detect any issues related to both the incoming power and motor circuit and provide fault information if a problem arises.



Periodic Inspection

PERIODIC INSPECTION SCHEDULE		
INSPECTION FREQUENCY	COMPONENT	INSPECTION PROCESS
Every Use, by Owner/Operator	General System	Listen for unusual noise or vibration. If excessive noise or vibration is detected, take the system out of service and call SubAir® Systems.
		Assure that air is flowing in/out of the air intake port.
		Assure that air is flowing in the proper direction at the air intake/exhaust port (i.e., being pushed out of the port when operated in the vacuum mode and being pulled into the port in the pressure mode).
		Observe control panel fault light and monitor if illuminated.
Monthly, by Owner/Operator	Control Panel	Run the system in all modes, assuring all electrical and, if available, radio signals communicate properly
	Fan/Motor	Allow the unit to operate a minimal of four (4) hours per month
	Vault	Open vault lid and visually inspect the unit, noting any accumulated water or irregularities
	Submersible Pump	Visually inspect for water in the vault.
Quarterly, by Owner/Operator	Dual Valve	Inspect the valve; remove lid and visually inspect to ensure no debris is present. Turn SubAir® to both pressure and vacuum mode to ensure air effectively flows to valve location.
	Clean out	Inspect this location; remove cap visually inspect to ensure no debris is present. Turn SubAir® to both pressure and vacuum mode to ensure air effectively flows to valve location.

➤ DANGER

- Prior to servicing the system, make sure the system is off and the main disconnect on the control panel is turned to "OFF" and locked out. Confirm that there is no power to the in-ground vault system before providing maintenance to the unit.
- Do not enter the vault if flooded. Instead, pump out all water before troubleshooting/conducting maintenance work on the unit.
- Do not tamper with system components, electrical wiring or connections. All electrical components, wiring and connections must be serviced by a qualified electrician or electrical technician.

➤ WARNING

- Only trained technicians should repair or service the system. Anyone doing even simple repairs or service should follow the procedures exactly as stated in this manual, and follow all DANGER, WARNING and CAUTION procedures listed in this manual.
- Shut down the system immediately if there is any sudden increase in blower vibration, or other unusual change in operational characteristics.
- Do not disconnect the vault's dewatering pump from the power supply, except as required to service or replacement. Never operate the system without a functioning submersible dewatering pump installed and connected to the power supply.
- Wear safety glasses or approved eye protection when servicing.
- Do not wear loose clothing or jewelry when servicing system.
- Use insulated tools when working on or around electrical connections.
- Improper use of product or failure to properly maintain it could result in decreased system performance or severe personal injury.
- Any modification or change to the system could result in severe personal injury or death.
- If any problems are found during scheduled inspection, do not operate the system until repairs are made.
- Failure to make necessary repairs could result in fire, property damage, severe personal injury, or death.
- To ensure trouble-free product performance, it is very important to follow a periodic inspection program.
- Regular and consistent system inspection and maintenance can prevent down-time and expensive repairs that result from neglect. Any system not functioning correctly should be removed from use until it is repaired. This will prevent further damage to the system and avoid the possibility of operator injury.

LUBRICATION

The SubAir® blower motor bearings are fully lubricated from the factory.

Troubleshooting, System Faults, and Fault Indicator Illuminations

General Problems

Problem	Probable Cause of Problem/Fault	Remedy
Motor will not start	No power supply to system.	Supply power to system.
	Disconnect(s) in "OFF" position.	Turn to "ON" position.
	Tripped circuit breaker in control-panel box.	Check primary and secondary circuit breakers.
	Water in vault has caused float switches to deactivate system.	Assure pump is operating properly. Repair/replace pump if necessary
		Check float switch position in vault. Assure float is not seized in incorrect position
	Defective wiring or loose connections in circuit.	Check VFD for fault code. Locate and correct defects or poor connections
	TurfWatch Communication Failure	Check for alerts/faults on local unit. See Fault Alarms Pg. 32
System does not operate in selected mode (Vacuum or Pressure)	Diverter Valve Unable to Reach Desired Position	Check for obstructions, loose shaft coupling, bad actuator feedback wiring connections
	Defective electrical connection between air-reversing actuator and controller	Check conductor continuity and replace as required. Check electrical connections and tighten as required
	Air-reversing valve actuator failure.	Test actuator and replace actuator as required.
Low or no air flow	Air-reversing valve jam	Loosen actuator and ensure air-reversing paddle rotates from pressure position to vacuum position freely. Remove any obstructions. With actuator loosened, ensure full paddle actuation.
	Blockage in turf drainage system.	Clear blockage.
	Turf is saturated with water.	Operate system in vacuum mode for an extended period.
	Intake/exhaust port blocked.	Find and clear blockage.
	Air-reversing valve malfunction	Ensure air flow diverter paddle is fully seated in the selected mode of operation
Excessive vibration.	Blower impeller is loose.	Call SubAir® Systems for assistance.
	Loose mounting bolts, set screws, bearings, or couplings.	Tighten as required. If disassembly of motor/blower unit is required, have SubAir® Systems or authorized representative make repair.
	Misaligned or unbalanced motor.	Check and adjust.
	Bent shaft or impeller due to foreign matter impact.	Replace bent component. Have SubAir® Systems or authorized representative make repair.
Excessive noise.	Excessive wear or corrosion of impeller.	Replace impeller. Have SubAir® Systems or authorized representative make repair.
	Foreign object hitting impeller.	Remove foreign object.
	Drainage system resonance or pulsation.	Look for broken pipe or loose joint.
Premature component failure.	Loose accessories or components on system.	Locate and tighten.
	Prolonged or intense vibration.	Locate and correct source of vibration. Repair/replace components as required.
	Abrasive or corrosive elements in the airstream or surrounding environment.	Look for breaks in piping and repair.
	Misalignment or physical damage to rotating components or bearings.	Repair, replace, or adjust components as required. Have SubAir® Systems or authorized representative make repair.
	Chronic problem of water slugs stalling blower and overloading motor.	Repair system leaks; assure proper operation of air/water separation and dual valve components

Fault Indicator Illuminations

Problem/Fault	Probable Cause of Problem/Fault	Remedy
Fault Illumination Illuminated	An error or fault is detected by the safety circuit.	Identify core problem. Common causes include magnetic safety switch, float switch, temperature switch, or drive fault. See below for remedy to each.
Magnetic Safety Switch	Magnetic safety switch on vault's viewport lid does not close	Reposition the viewport lid to assure that the magnetic switch on the lid aligns with the magnetic switch receiver portion inside the vault.
Float Switch	Float switch indicates possibility of water in the vault.	Open view port on vault and investigate vault. One inch or less of standing water in the bottom of the vault is normal. However, if water the level is greater than one inch then the sump pump may not be functioning properly.
Thermal Switch	Air temperature in the blower exhaust exceeds preset operating temperature	Unit will automatically reset as soon as air temperatures return to an acceptable level. Inspect intake/exhaust to ensure there are no obstructions to the intake/exhaust air.
Drive Fault	Variable Frequency Drive (VFD) senses an internal fault.	Refer to Altivar 320 manual for troubleshooting steps, and code definitions.

SubAir® Systems Limited Warranty

SubAir® Systems LLC (SubAir® Systems) warrants, in accordance with the provisions below, to the original purchaser for the period of twelve (12) months from the date of commissioning that the system is free from any defects in material or workmanship. SubAir® Systems' obligation under warranty is to repair or replace, at SubAir® Systems' election, without charge, any part or parts of the system which, in the judgment of SubAir® Systems, prove to be defective.

This warranty and SubAir® System's obligation hereunder are in lieu of all other warranties, expressed or implied, including, without limitation, the implied warranty of merchantability or implied warranty of fitness for particular purpose, and all other obligations or liabilities of SubAir® Systems for incidental and consequential damages resulting from the design, manufacture, sale or use of the system. No person is authorized to make any warranty or assume for SubAir® Systems any liability not strictly in accordance with this warranty.

SubAir® Systems LLC warranties are contingent upon proper installation of not only the materials and equipment provided by SubAir®, but also the connecting drain pipe that becomes part of the complete system. Documentation of the installation is needed for warranty issues as well as for potential modifications and repairs in the future. Photos showing the exposed, in-place components (pipe, water separators, traps and vaults), and as-built drawings with key elevation measurements as defined in the installation guide are required.

SubAir® is not responsible for injury or damage resulting from improper installation of this equipment, noncompliance with the Installation Guide, or from use outside the application for which it was sold. This warranty shall not apply to any system or system part, which in the judgment of SubAir® Systems, has been improperly installed, altered or tampered with in any way or has been subjected to misuse, neglect or accident, or has had the serial numbers altered, effaced or removed. This warranty does not apply to component parts not manufactured by SubAir® Systems (motor, blower, actuator) except to the extent of their individual manufacturer guarantees.

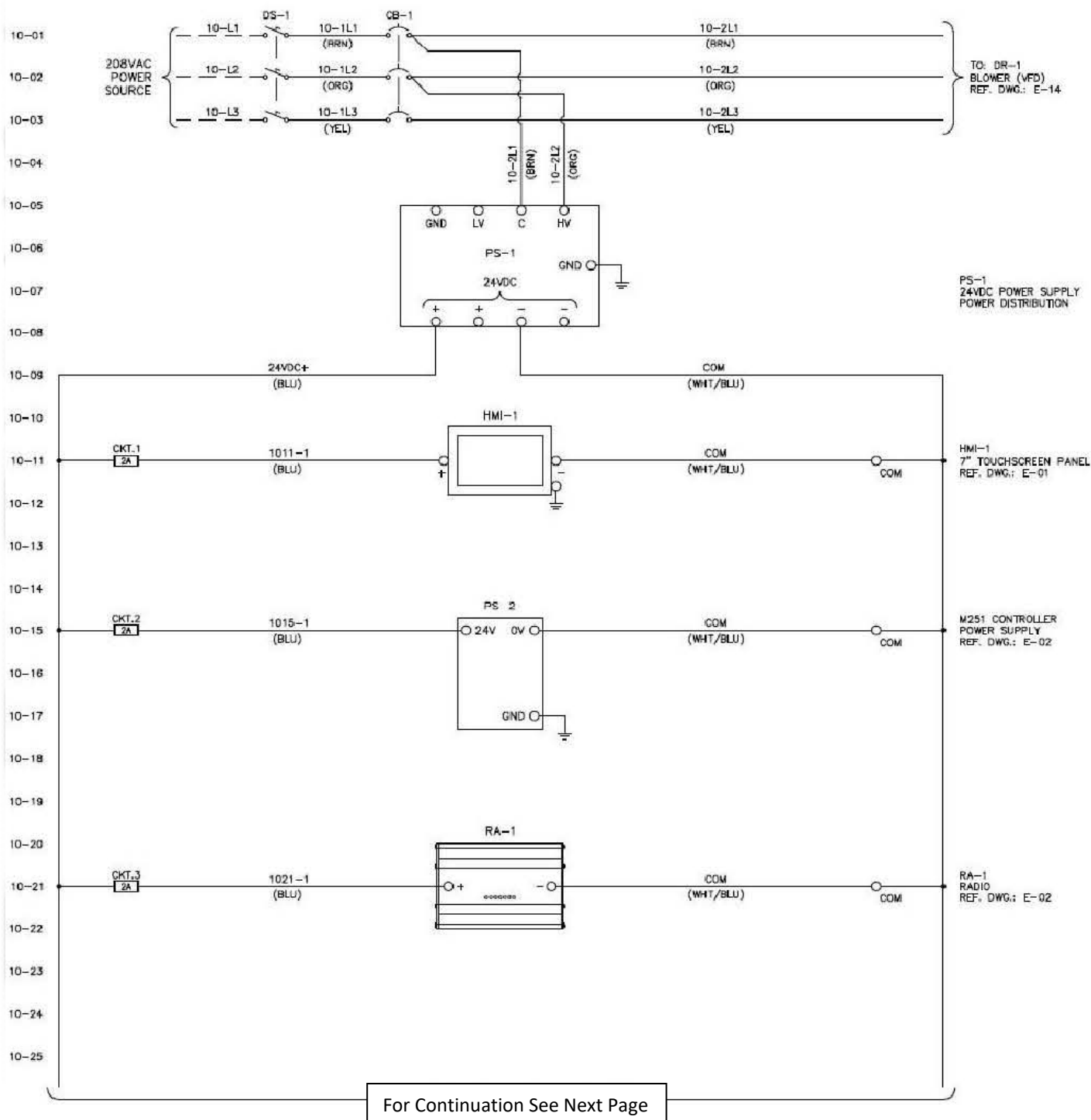
➤ **WARNING**

- Any unauthorized modification, alteration, or use of non-approved attachments may present safety hazards that are not present in this manual. If any such modifications, alterations, or attachments are used, all warranties are void and SubAir® Systems, LLC is released from any liability for injury and/or damage arising from subsequent use of this equipment.

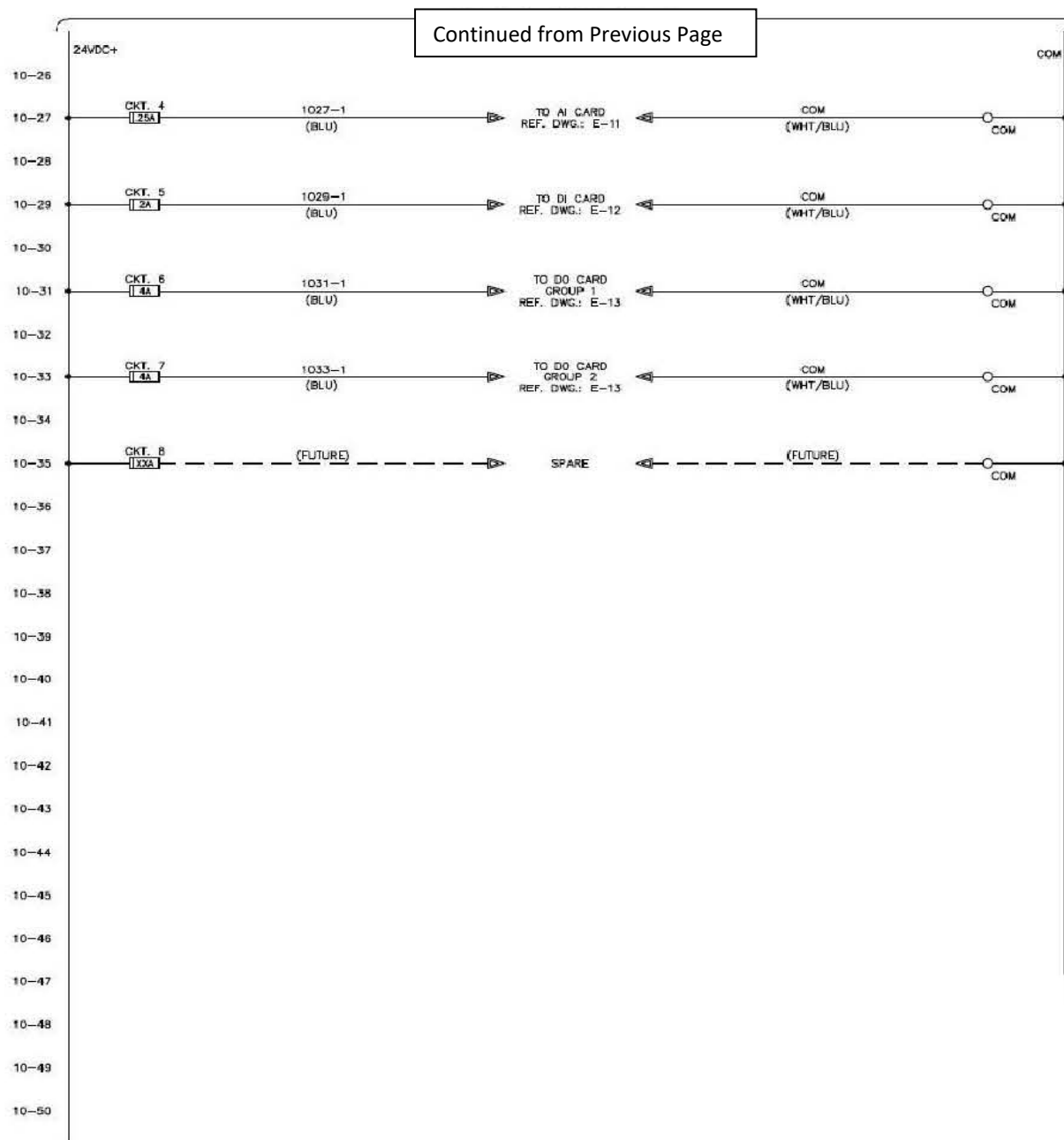
ALL WARRANTY REPAIR AND SERVICE MUST BE HANDLED THROUGH AN AUTHORIZED SUBAIR® SYSTEMS REPRESENTATIVE OR DIRECTLY WITH SUBAIR® SYSTEMS, LLC.

Electrical Schematics

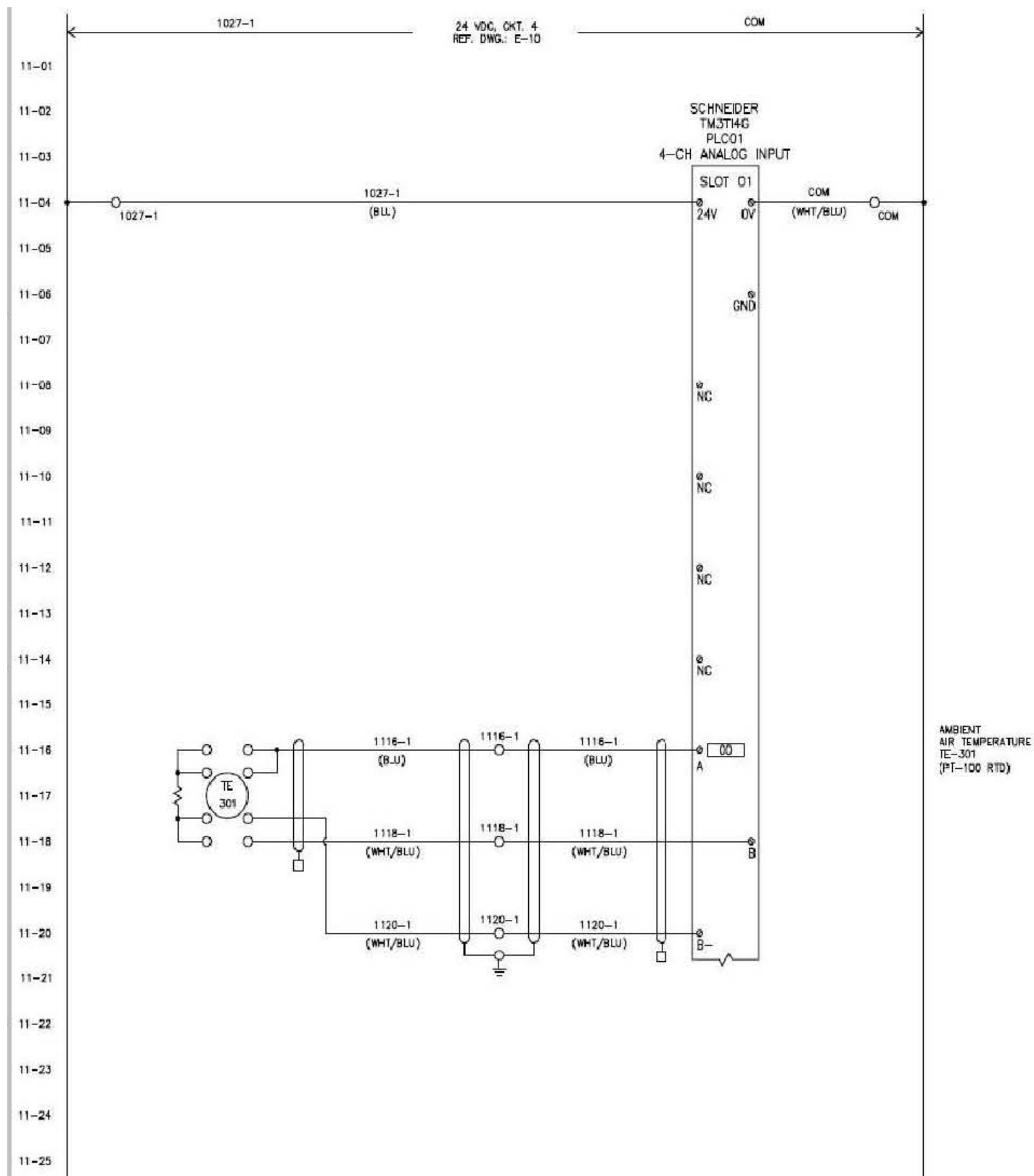
Standard Electrical Schematic – Wiring Diagram Power Distribution



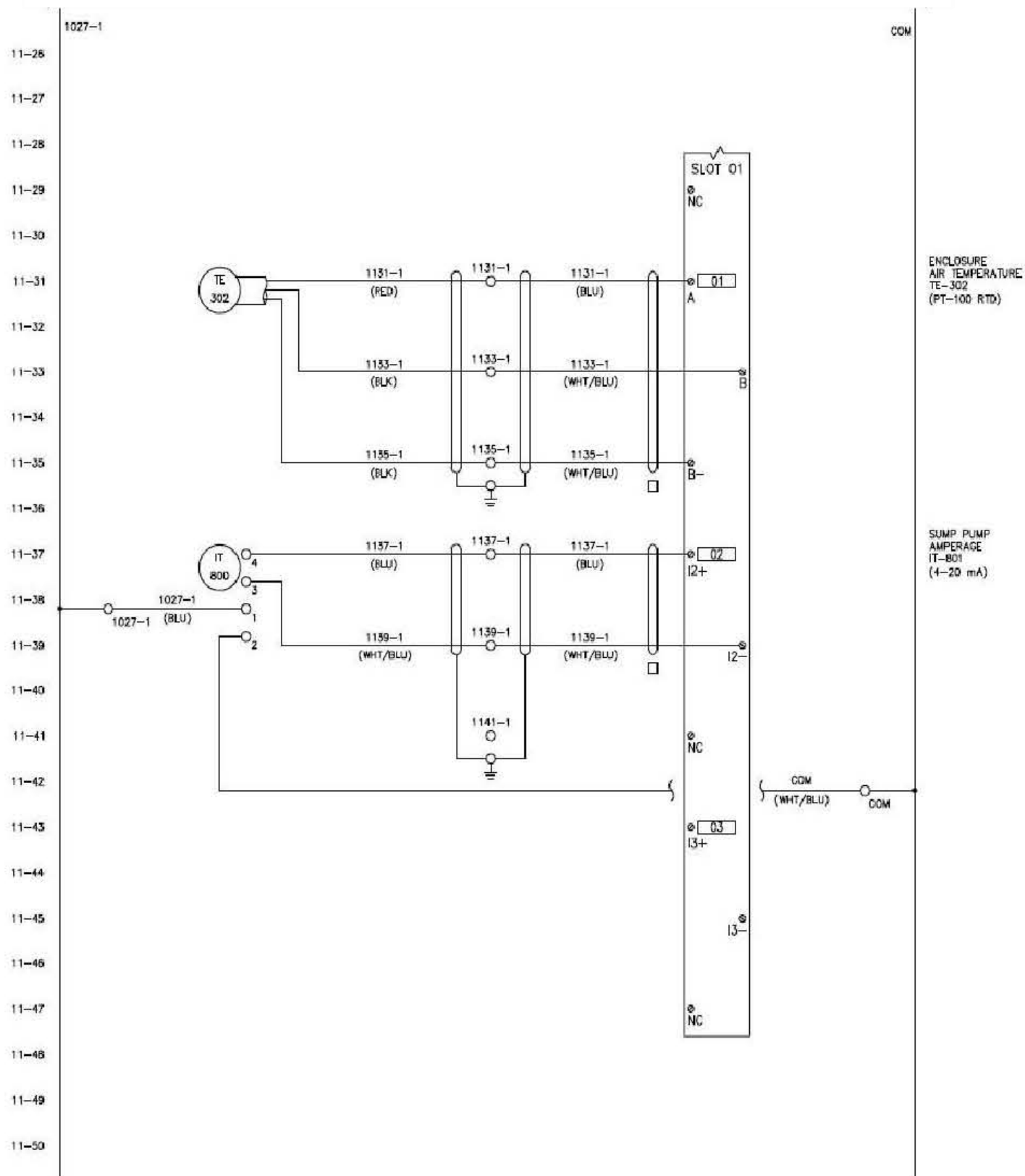
Standard Electrical Schematic – Wiring Diagram Power Distribution



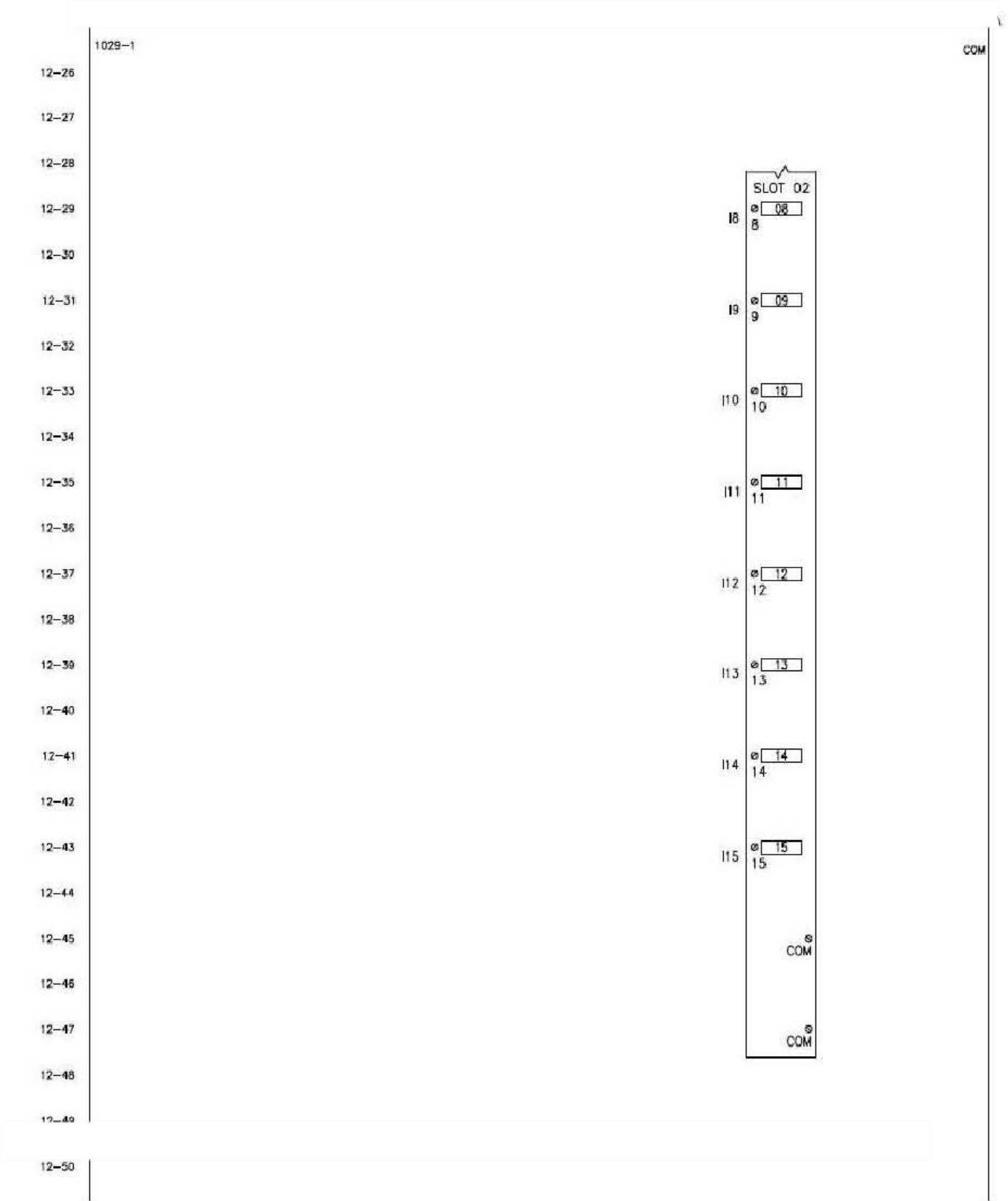
Standard Electrical Schematic – Wiring Diagram Power Distribution



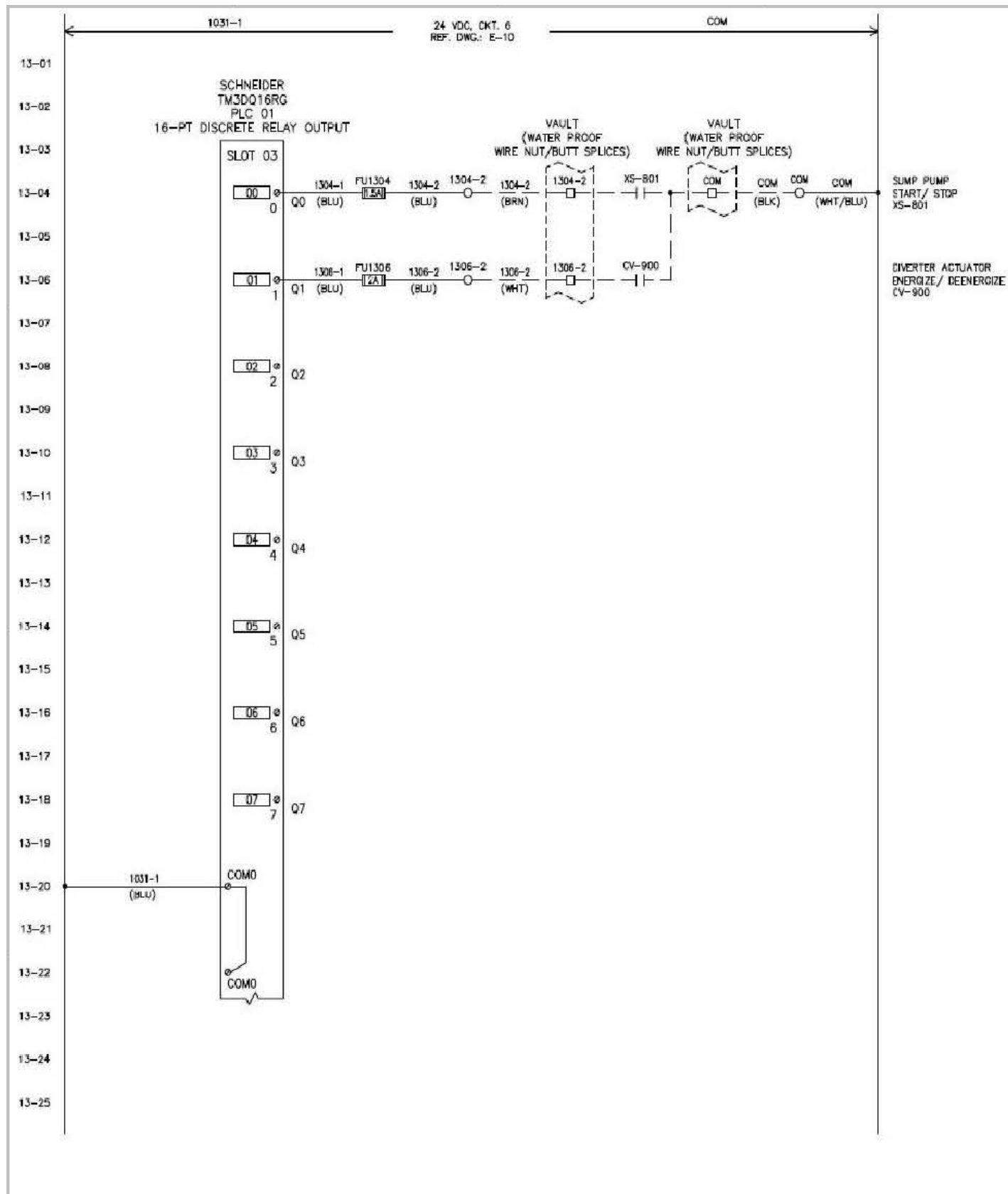
Standard Electrical Schematic – Wiring Diagram Power Distribution



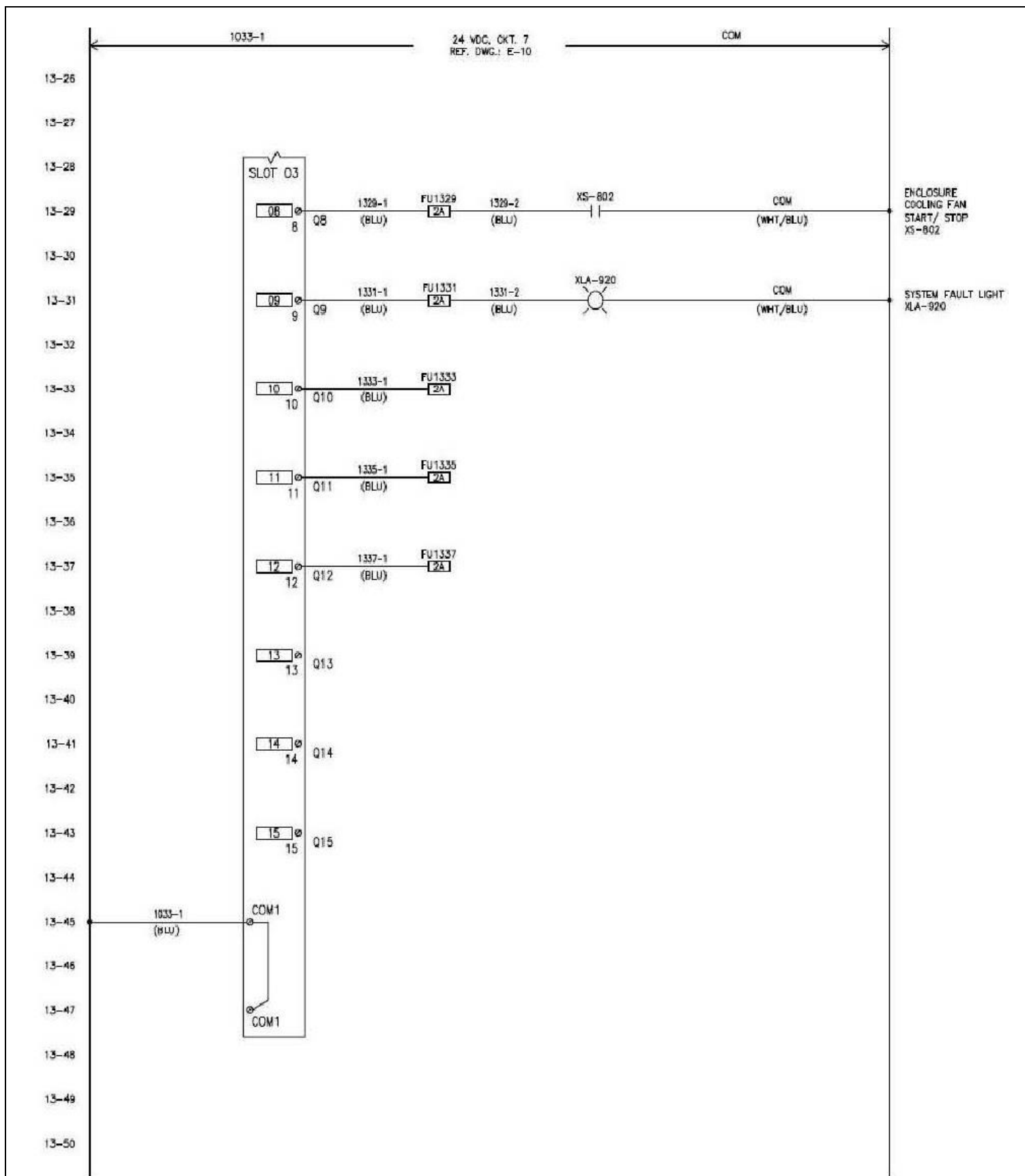
Standard Electrical Schematic – Wiring Diagram Power Distribution



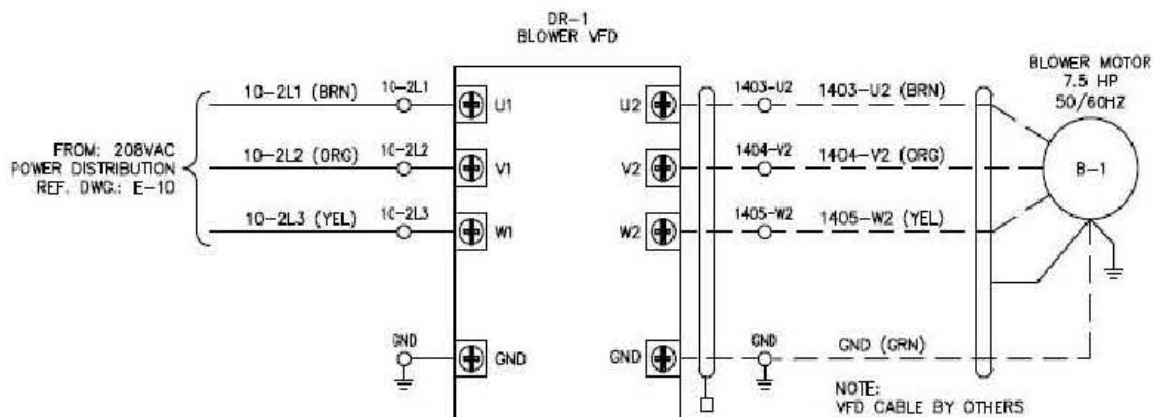
Standard Electrical Schematic – Wiring Diagram Power Distribution



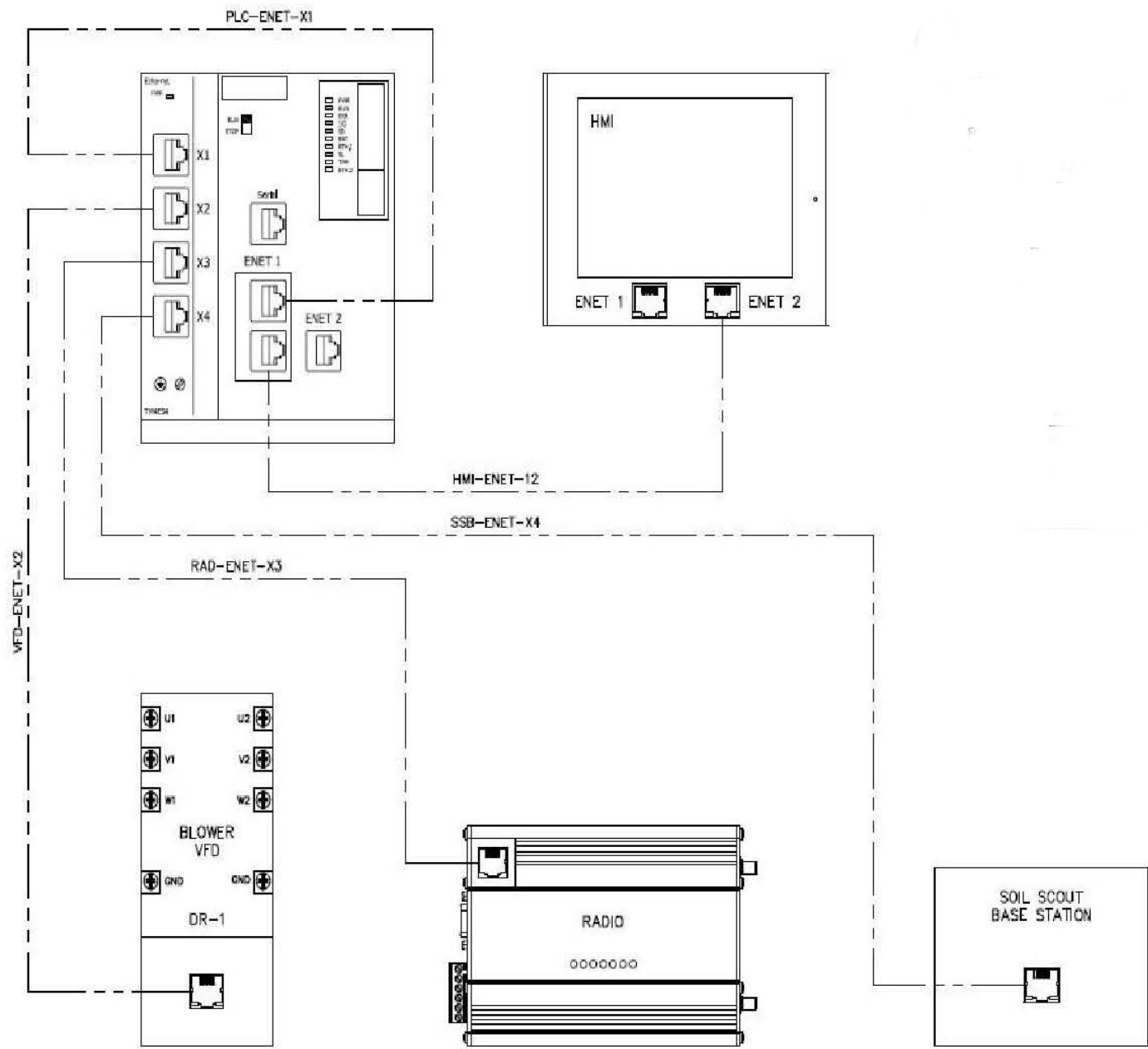
Standard Electrical Schematic – Wiring Diagram Power Distribution



Standard Electrical Schematic – Wiring Diagram Power Distribution



Standard Electrical Schematic – Wiring Diagram Power Distribution



Standard Electrical Schematic – Wiring Diagram Power Distribution

ROUTER PORT FORWARDING CONFIGURATION

DEVICE	IP ADDRESS	SUBNET MASK	GATEWAY
PLC	192.168.10.V	255.255.255.0	192.168.10.1
HMI	192.168.10.W	255.255.255.0	192.168.10.1
RADIO	192.168.10.X	255.255.255.0	192.168.10.1
SS BASE	192.168.10.Y	255.255.255.0	192.168.10.1
VFD	192.168.10.Z	255.255.255.0	192.168.10.1

DEVICE	PORT NO.
MAGELIS WEB SERVER	H + 8080
MAGELIS DATA SHARING	H + 6000
VIJEO DESIGN*AIR	H + 6050
RADMIN (IF APPLICABLE)	H + 4900
—	—

IP ADDRESS LEGEND
V= HOLE NO. +10
W= HOLE NO. +50
X= HOLE NO. +100
Y= HOLE NO. +150
Z= HOLE NO. +200

PORT NO. LEGEND
H = HOLE NO.

Standard Electrical Schematic – Wiring Diagram Power Distribution

